

Summary

Production Name	p120 Rabbit Polyclonal Antibody
Description	Rabbit Polyclonal Antibody
Host	Rabbit
Application	IHC, WB, ELISA
Reactivity	Human, Mouse, Rat

Performance

Conjugation	Unconjugated
Modification	Unmodified
Isotype	IgG
Clonality	Polyclonal
Form	Liquid
Storage	Store at 4°C short term. Aliquot and store at -20°C long term. Avoid freeze/thaw cycles.
Buffer	Liquid in PBS containing 50% glycerol, 0.5% BSA and 0.02% New type preservative N.
Purification	Affinity purification

Immunogen

Gene Name	CTNND1
Alternative Names	CTNND1; KIAA0384; Catenin delta-1; Cadherin-associated Src substrate; CAS; p120 catenin; p120(ctn); p120(cas)
Gene ID	1500.0
SwissProt ID	O60716. The antiserum was produced against synthesized peptide derived from human Catenin-delta1. AA range:201-250

Application

Dilution Ratio	WB 1:500 - 1:2000. IHC 1:100 - 1:300. ELISA: 1:20000..
Molecular Weight	108kD

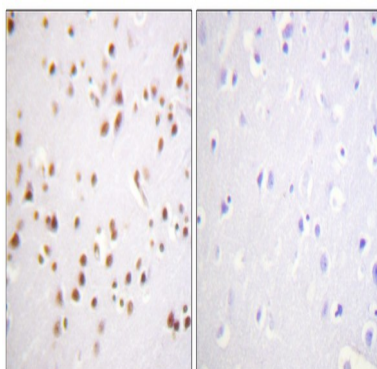
Background

catenin delta 1 (CTNND1) Homo sapiens This gene encodes a member of the Armadillo protein family, which function in adhesion between cells and signal transduction. Multiple translation initiation codons and alternative splicing result in many different isoforms being translated. Not all of the full-length natures of the described transcript variants have been determined. Read-through transcription also exists between this gene and the neighboring upstream thioredoxin-related transmembrane protein 2 (TMX2) gene. [provided by RefSeq, Dec 2010],alternative products:Experimental confirmation may be lacking for some isoforms,disease:May contribute to cell malignancy. Complete loss of expression was observed in approximately 10% of invasive ductal breast carcinomas investigated.,domain:A possible nuclear localization signal exists in all isoforms where Asp-626--631-Arg are deleted.,function:Binds to and inhibits the transcriptional repressor ZBTB33, which may lead to activation of target genes of the Wnt signaling pathway (By similarity). May associate with and regulate the cell adhesion properties of both C- and E-cadherins. Implicated both in cell transformation by SRC and in ligand-induced receptor signaling through the EGF, PDGF, CSF-1 and ERBB2 receptors. Promotes GLIS2 C-terminal cleavage.,induction:Induced in vascular endothelium by wounding. This effect is potentiated by prior laminar shear stress, which enhances wound closure.,PTM:Phosphorylated.,similarity:Belongs to the beta-catenin family.,similarity:Contains 10 ARM repeats.,subcellular location:Interaction with GLIS2 promotes nuclear translocation.,subunit:Belongs to a multiprotein cell-cell adhesion complex that also contains E-cadherin, alpha-catenin, beta-catenin, and gamma-catenin. Binds to the C-terminal fragment of PSEN1 and mutually competes for E-cadherin. Interacts with ZBTB33. Interacts with GLIS2.,tissue specificity:Expressed in vascular endothelium.,

Research Area

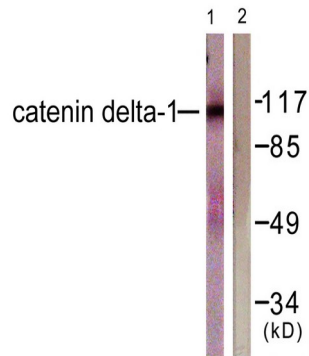
Adherens_Junction;Leukocyte transendothelial migration;

Image Data

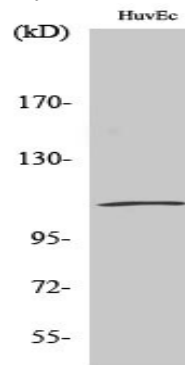


Immunohistochemistry analysis of paraffin-embedded human brain tissue, using Catenin-delta1 Antibody. The picture on the right is blocked with the synthesized peptide.

Product Name: p120 Rabbit Polyclonal Antibody
Catalog #: APRab15566



Western blot analysis of lysates from HUVEC cells, using Catenin-delta1 Antibody. The lane on the right is blocked with the synthesized peptide.



Western Blot analysis of various cells using p120 Polyclonal Antibody

Note

For research use only.