
Summary

Production Name	p115 Rabbit Polyclonal Antibody
Description	Rabbit Polyclonal Antibody
Host	Rabbit
Application	WB,ELISA
Reactivity	Human,Rat,Mouse

Performance

Conjugation	Unconjugated
Modification	Unmodified
Isotype	IgG
Clonality	Polyclonal
Form	Liquid
Storage	Store at 4°C short term. Aliquot and store at -20°C long term. Avoid freeze/thaw cycles.
Buffer	Liquid in PBS containing 50% glycerol, 0.5% BSA and 0.02% New type preservative N.
Purification	Affinity purification

Immunogen

Gene Name	USO1
Alternative Names	USO1; VDP; General vesicular transport factor p115; Protein USO1 homolog; Transcytosis-associated protein; TAP; Vesicle-docking protein
Gene ID	8615.0
SwissProt ID	O60763.The antiserum was produced against synthesized peptide derived from human USO1. AA range:913-962

Application

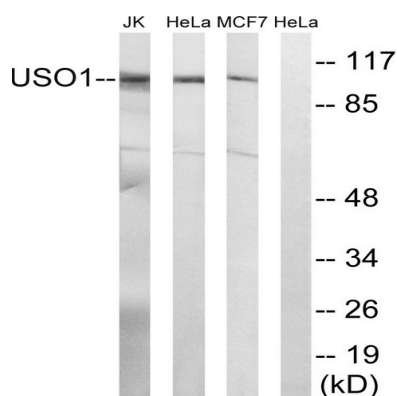
Dilution Ratio	WB 1:500 - 1:2000. ELISA: 1:40000. Not yet tested in other applications.
Molecular Weight	108kD

Background

The protein encoded by this gene is a peripheral membrane protein which recycles between the cytosol and the Golgi apparatus during interphase. It is regulated by phosphorylation: dephosphorylated protein associates with the Golgi membrane and dissociates from the membrane upon phosphorylation. Ras-associated protein 1 recruits this protein to coat protein complex II (COPII) vesicles during budding from the endoplasmic reticulum, where it interacts with a set of COPII vesicle-associated SNAREs to form a cis-SNARE complex that promotes targeting to the Golgi apparatus. Alternative splicing results in multiple transcript variants. [provided by RefSeq, Feb 2014],domain:Composed of a globular head, an elongated tail (coiled-coil) and a highly acidic C-terminal domain.,function:General vesicular transport factor required for intercisternal transport in the Golgi stack; it is required for transcytotic fusion and/or subsequent binding of the vesicles to the target membrane. May well act as a vesicular anchor by interacting with the target membrane and holding the vesicular and target membranes in proximity.,PTM:Phosphorylated in a cell cycle-specific manner; phosphorylated in interphase but not in mitotic cells. Dephosphorylated protein associates with the Golgi membrane; phosphorylation promotes dissociation.,similarity:Belongs to the VDP/USO1/EDE1 family.,subcellular location:Recycles between the cytosol and the Golgi apparatus during interphase.,

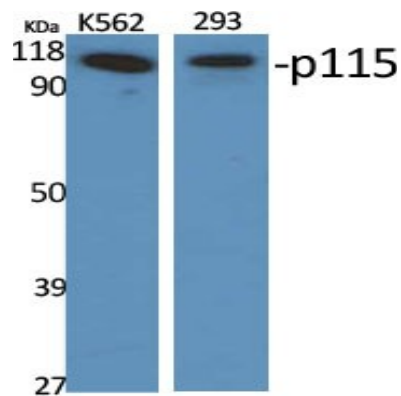
Research Area

Image Data

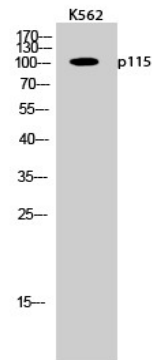


Western blot analysis of lysates from MCF-7, HeLa, and Jurkat cells, using USO1 Antibody. The lane on the right is blocked with the synthesized peptide.

Product Name: p115 Rabbit Polyclonal Antibody
Catalog #: APRab15565



Western Blot analysis of various cells using p115 Polyclonal Antibody diluted at 1: 2000



Western Blot analysis of K562 cells using p115 Polyclonal Antibody diluted at 1: 2000

Note

For research use only.