

Product Name: Oxr1 Rabbit Polyclonal Antibody
Catalog #: APRab15555



Summary

Production Name	Oxr1 Rabbit Polyclonal Antibody
Description	Rabbit Polyclonal Antibody
Host	Rabbit
Application	IHC,ELISA
Reactivity	Human,Mouse,Rat

Performance

Conjugation	Unconjugated
Modification	Unmodified
Isotype	IgG
Clonality	Polyclonal
Form	Liquid
Storage	Store at 4°C short term. Aliquot and store at -20°C long term. Avoid freeze/thaw cycles.
Buffer	Liquid in PBS containing 50% glycerol, 0.5% BSA and 0.02% New type preservative N.
Purification	Affinity purification

Immunogen

Gene Name	OXR1
Alternative Names	OXR1; Nbla00307; Oxidation resistance protein 1
Gene ID	55074.0
SwissProt ID	Q8N573.The antiserum was produced against synthesized peptide derived from human OXR1. AA range:472-521

Application

Dilution Ratio	IHC 1:100-1:300 ELISA: 1:40000
Molecular Weight	85kD

Background

function:May be involved in protection from oxidative damage.,induction:By heat and oxidative stress.,PTM:Phosphorylated

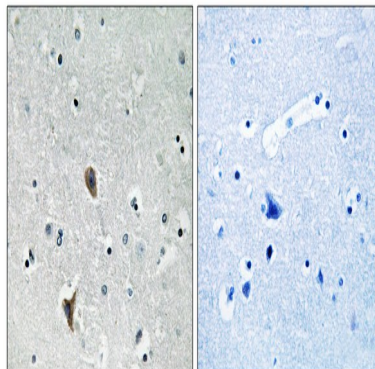
Product Name: Oxr1 Rabbit Polyclonal Antibody
Catalog #: APRab15555



upon DNA damage, probably by ATM or ATR.,similarity:Belongs to the OXR1 family.,similarity:Contains 1 GRAM domain.,similarity:Contains 1 LysM repeat.,similarity:Contains 1 TLD domain.,function:May be involved in protection from oxidative damage.,induction:By heat and oxidative stress.,PTM:Phosphorylated upon DNA damage, probably by ATM or ATR.,similarity:Belongs to the OXR1 family.,similarity:Contains 1 GRAM domain.,similarity:Contains 1 LysM repeat.,similarity:Contains 1 TLD domain.,

Research Area

Image Data



Immunohistochemistry analysis of paraffin-embedded human brain tissue, using OXR1 Antibody. The picture on the right is blocked with the synthesized peptide.

Note

For research use only.