

---

## Summary

<b>Production Name</b>	Osteoglycin Rabbit Polyclonal Antibody
<b>Description</b>	Rabbit Polyclonal Antibody
<b>Host</b>	Rabbit
<b>Application</b>	WB,ELISA
<b>Reactivity</b>	Human,Mouse

## Performance

<b>Conjugation</b>	Unconjugated
<b>Modification</b>	Unmodified
<b>Isotype</b>	IgG
<b>Clonality</b>	Polyclonal
<b>Form</b>	Liquid
<b>Storage</b>	Store at 4°C short term. Aliquot and store at -20°C long term. Avoid freeze/thaw cycles.
<b>Buffer</b>	Liquid in PBS containing 50% glycerol, 0.5% BSA and 0.02% New type preservative N.
<b>Purification</b>	Affinity purification

## Immunogen

<b>Gene Name</b>	OGN
<b>Alternative Names</b>	OGN; OIF; SLRR3A; Mimecan; Osteoglycin; Osteoinductive factor; OIF
<b>Gene ID</b>	4969.0
<b>SwissProt ID</b>	P20774.The antiserum was produced against synthesized peptide derived from the C-terminal region of human OGN. AA range:231-280

## Application

<b>Dilution Ratio</b>	WB 1:500 - 1:2000. ELISA: 1:20000
<b>Molecular Weight</b>	35kD

## Background

---

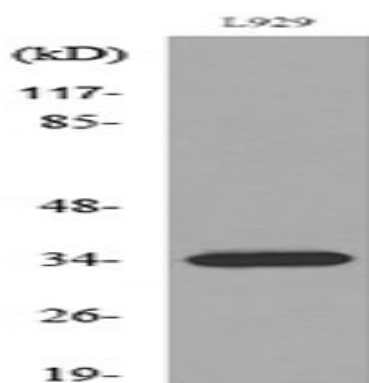
**Product Name: Osteoglycin Rabbit Polyclonal Antibody**  
**Catalog #: APRab15525**



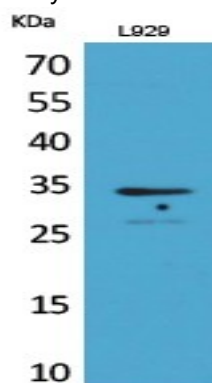
This gene encodes a member of the small leucine-rich proteoglycan (SLRP) family of proteins. The encoded protein induces ectopic bone formation in conjunction with transforming growth factor beta and may regulate osteoblast differentiation. High expression of the encoded protein may be associated with elevated heart left ventricular mass. Alternative splicing results in multiple transcript variants. [provided by RefSeq, Jan 2016],function:Induces bone formation in conjunction with TGF-beta-1 or TGF-beta-2.,similarity:Belongs to the small leucine-rich proteoglycan (SLRP) family. Class III subfamily.,similarity:Contains 7 LRR (leucine-rich) repeats.,tissue specificity:Bone.,

## Research Area

## Image Data



Western blot analysis of lysate from L929 cells, using OGN Antibody.



Western Blot analysis of L929 cells using Osteoglycin Polyclonal Antibody.. Secondary antibody was diluted at 1:20000

## Note

For research use only.