

**Product Name: OSM Rabbit Polyclonal Antibody**  
**Catalog #: APRab15519**



## Summary

<b>Production Name</b>	OSM Rabbit Polyclonal Antibody
<b>Description</b>	Rabbit Polyclonal Antibody
<b>Host</b>	Rabbit
<b>Application</b>	IHC,
<b>Reactivity</b>	Human,Rat,Mouse

## Performance

<b>Conjugation</b>	Unconjugated
<b>Modification</b>	Unmodified
<b>Isotype</b>	IgG
<b>Clonality</b>	Polyclonal
<b>Form</b>	Liquid
<b>Storage</b>	Store at 4°C short term. Aliquot and store at -20°C long term. Avoid freeze/thaw cycles.
<b>Buffer</b>	Liquid in PBS containing 50% glycerol, 0.5% BSA and 0.02% New type preservative N.
<b>Purification</b>	Affinity purification

## Immunogen

<b>Gene Name</b>	OSM
<b>Alternative Names</b>	Oncostatin-M (OSM)
<b>Gene ID</b>	5008.0
<b>SwissProt ID</b>	P13725.Synthetic peptide from human protein at AA range: 50-100

## Application

<b>Dilution Ratio</b>	IHC-p 1:50-200, ELISA 1:10000-20000.
<b>Molecular Weight</b>	

## Background

This gene encodes a member of the leukemia inhibitory factor/oncostatin-M (LIF/OSM) family of proteins. The encoded

**Product Name: OSM Rabbit Polyclonal Antibody**  
**Catalog #: APRab15519**

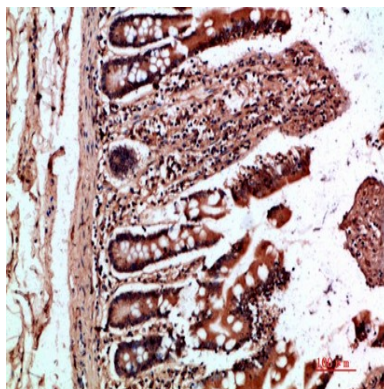


preproprotein is proteolytically processed to generate the mature protein. This protein is a secreted cytokine and growth regulator that inhibits the proliferation of a number of tumor cell lines. This protein also regulates the production of other cytokines, including interleukin 6, granulocyte-colony stimulating factor and granulocyte-macrophage colony stimulating factor in endothelial cells. This gene and the related gene, leukemia inhibitory factor, also present on chromosome 22, may have resulted from the duplication of a common ancestral gene. Alternative splicing results in multiple transcript variants, at least one of which encodes an isoform that is proteolytically processed. [provided by RefSeq, Jan 2016],function:Growth regulator. Inhibits the proliferation of a number of tumor cell lines. Stimulates proliferation of AIDS-KS cells. It regulates cytokine production, including IL-6, G-CSF and GM-CSF from endothelial cells. Uses both type I OSM receptor (heterodimers composed of LIPR and IL6ST) and type II OSM receptor (heterodimers composed of OSMR and IL6ST),similarity:Belongs to the LIF/OSM family,.

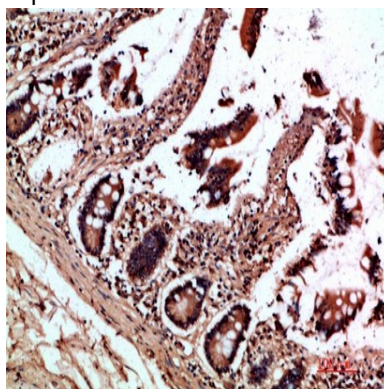
## Research Area

Cytokine-cytokine receptor interaction;Jak\_STAT;

## Image Data

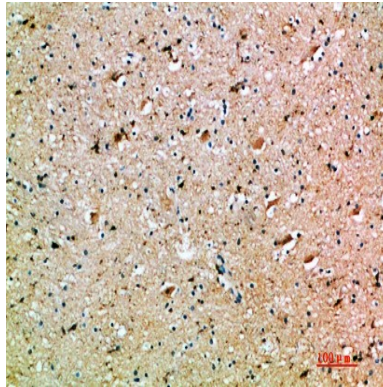


Immunohistochemical analysis of paraffin-embedded human-colon, antibody was diluted at 1:200

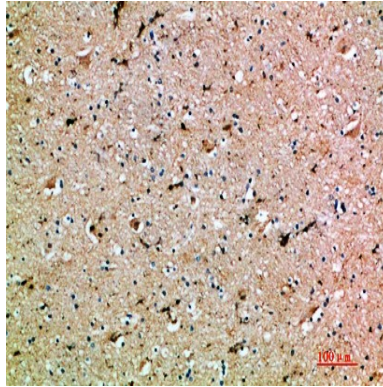


Immunohistochemical analysis of paraffin-embedded human-colon, antibody was diluted at 1:200

**Product Name: OSM Rabbit Polyclonal Antibody**  
**Catalog #: APRab15519**



Immunohistochemical analysis of paraffin-embedded human-brain, antibody was diluted at 1:200



Immunohistochemical analysis of paraffin-embedded human-brain, antibody was diluted at 1:200

### **Note**

For research use only.