

**Product Name: Orexin R-1 Rabbit Polyclonal Antibody**  
**Catalog #: APRab15504**



## Summary

<b>Production Name</b>	Orexin R-1 Rabbit Polyclonal Antibody
<b>Description</b>	Rabbit Polyclonal Antibody
<b>Host</b>	Rabbit
<b>Application</b>	IF,ELISA
<b>Reactivity</b>	Human,Mouse,Rat

## Performance

<b>Conjugation</b>	Unconjugated
<b>Modification</b>	Unmodified
<b>Isotype</b>	IgG
<b>Clonality</b>	Polyclonal
<b>Form</b>	Liquid
<b>Storage</b>	Store at 4°C short term. Aliquot and store at -20°C long term. Avoid freeze/thaw cycles.
<b>Buffer</b>	Liquid in PBS containing 50% glycerol, 0.5% BSA and 0.02% New type preservative N.
<b>Purification</b>	Affinity purification

## Immunogen

<b>Gene Name</b>	HCRT1
<b>Alternative Names</b>	HCRT1; Orexin receptor type 1; Ox-1-R; Ox1-R; Ox1R; Hypocretin receptor type 1
<b>Gene ID</b>	3061.0
<b>SwissProt ID</b>	O43613.The antiserum was produced against synthesized peptide derived from human HCRT1. AA range:298-347

## Application

<b>Dilution Ratio</b>	IF 1:200-1:1000. ELISA: 1:20000.
<b>Molecular Weight</b>	

## Background

The protein encoded by this gene is a G-protein coupled receptor involved in the regulation of feeding behavior. The

**Product Name: Orexin R-1 Rabbit Polyclonal Antibody**  
**Catalog #: APRab15504**



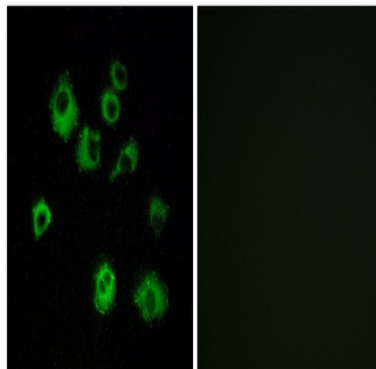
---

encoded protein selectively binds the hypothalamic neuropeptide orexin A. A related gene (HCRTR2) encodes a G-protein coupled receptor that binds orexin A and orexin B. [provided by RefSeq, Jan 2009],function:Moderately selective excitatory receptor for orexin-A and, with a lower affinity, for orexin-B neuropeptide. Seems to be exclusively coupled to the G(q) subclass of heteromeric G proteins, which activates the phospholipase C mediated signaling cascade.,similarity:Belongs to the G-protein coupled receptor 1 family.,

## Research Area

Neuroactive ligand-receptor interaction;

## Image Data



Immunofluorescence analysis of MCF7 cells, using HCRTR1 Antibody. The picture on the right is blocked with the synthesized peptide.

## Note

For research use only.