
Summary

Production Name	ORC1 Rabbit Polyclonal Antibody
Description	Rabbit Polyclonal Antibody
Host	Rabbit
Application	WB,ELISA
Reactivity	Human,Rat,Mouse

Performance

Conjugation	Unconjugated
Modification	Unmodified
Isotype	IgG
Clonality	Polyclonal
Form	Liquid
Storage	Store at 4°C short term. Aliquot and store at -20°C long term. Avoid freeze/thaw cycles.
Buffer	Liquid in PBS containing 50% glycerol, 0.5% BSA and 0.02% New type preservative N.
Purification	Affinity purification

Immunogen

Gene Name	ORC1
Alternative Names	ORC1; ORC1L; PARC1; Origin recognition complex subunit 1; Replication control protein 1
Gene ID	4998.0
SwissProt ID	Q13415.The antiserum was produced against synthesized peptide derived from human ORC1L. AA range:331-380

Application

Dilution Ratio	WB 1:500 - 1:2000. ELISA: 1:5000. Not yet tested in other applications.
Molecular Weight	100,120kD

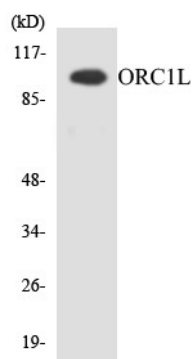
Background

The origin recognition complex (ORC) is a highly conserved six subunits protein complex essential for the initiation of the DNA replication in eukaryotic cells. Studies in yeast demonstrated that ORC binds specifically to origins of replication and serves as a platform for the assembly of additional initiation factors such as Cdc6 and Mcm proteins. The protein encoded by this gene is the largest subunit of the ORC complex. While other ORC subunits are stable throughout the cell cycle, the levels of this protein vary during the cell cycle, which has been shown to be controlled by ubiquitin-mediated proteolysis after initiation of DNA replication. This protein is found to be selectively phosphorylated during mitosis. It is also reported to interact with MYST histone acetyltransferase 2 (MyST2/HBO1), a protein involved in control of transcription silencing. Alternatively spliced transcrfunction:Component of the origin recognition complex (ORC) that binds origins of replication. It has a role in both chromosomal replication and mating type transcriptional silencing. Binds to the ARS consensus sequence (ACS) of origins of replication in an ATP-dependent manner.,similarity:Belongs to the ORC1 family.,similarity:Contains 1 BAH domain.,subunit:ORC is composed of six subunits. Interacts with CDC6 and MYST2/HBO1.,

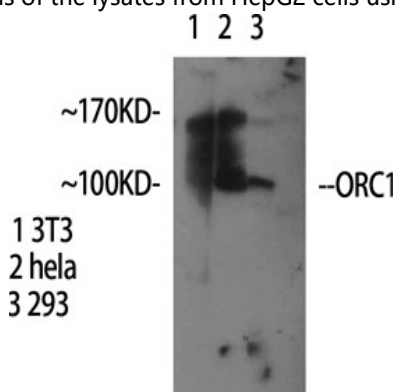
Research Area

Cell_Cycle_G1S;Cell_Cycle_G2M_DNA;

Image Data

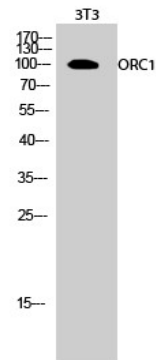


Western blot analysis of the lysates from HepG2 cells using ORC1L antibody.



Western Blot analysis of various cells using ORC1 Polyclonal Antibody

Product Name: ORC1 Rabbit Polyclonal Antibody
Catalog #: APRab15495



Western Blot analysis of 3T3 cells using ORC1 Polyclonal Antibody

Note

For research use only.