

**Product Name: Oncogene TIM Rabbit Polyclonal Antibody**  
**Catalog #: APRab15351**

---

## Summary

<b>Production Name</b>	Oncogene TIM Rabbit Polyclonal Antibody
<b>Description</b>	Rabbit Polyclonal Antibody
<b>Host</b>	Rabbit
<b>Application</b>	WB,ELISA
<b>Reactivity</b>	Human,Mouse,Rat

## Performance

<b>Conjugation</b>	Unconjugated
<b>Modification</b>	Unmodified
<b>Isotype</b>	IgG
<b>Clonality</b>	Polyclonal
<b>Form</b>	Liquid
<b>Storage</b>	Store at 4°C short term. Aliquot and store at -20°C long term. Avoid freeze/thaw cycles.
<b>Buffer</b>	Liquid in PBS containing 50% glycerol, 0.5% BSA and 0.02% New type preservative N.
<b>Purification</b>	Affinity purification

## Immunogen

<b>Gene Name</b>	ARHGEF5
<b>Alternative Names</b>	ARHGEF5; TIM; Rho guanine nucleotide exchange factor 5; Ephexin-3; Guanine nucleotide regulatory protein TIM; Oncogene TIM; Transforming immortalized mammary oncogene; p60 TIM
<b>Gene ID</b>	7984.0
<b>SwissProt ID</b>	Q12774.The antiserum was produced against synthesized peptide derived from human ARHGEF5. AA range:1280-1330

## Application

<b>Dilution Ratio</b>	WB 1:500 - 1:2000. ELISA: 1:20000
<b>Molecular Weight</b>	60kD

---

**Product Name: Oncogene TIM Rabbit Polyclonal Antibody**  
**Catalog #: APRab15351**

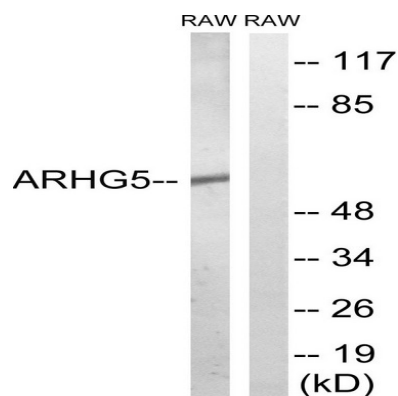
## Background

Rho GTPases play a fundamental role in numerous cellular processes initiated by extracellular stimuli that work through G protein coupled receptors. The encoded protein may form a complex with G proteins and stimulate Rho-dependent signals. This protein may be involved in the control of cytoskeletal organization. [provided by RefSeq, Jul 2008],similarity:Contains 1 DH (DBL-homology) domain.,similarity:Contains 1 PH domain.,similarity:Contains 1 SH3 domain.,tissue specificity:Mainly expressed in kidney, liver, pancreas, lung and placenta.,

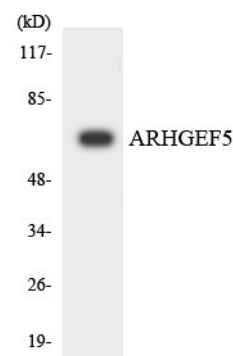
## Research Area

Regulation of Actin Dynamics; AMPK

## Image Data



Western blot analysis of lysates from RAW264.7 cells, using ARHG5 Antibody. The lane on the right is blocked with the synthesized peptide.



Western blot analysis of the lysates from K562 cells using ARHG5 antibody.

**Product Name: Oncogene TIM Rabbit Polyclonal  
Antibody**  
**Catalog #: APRab15351**



---

**Note**

For research use only.