

Product Name: Olfactory receptor 8U1/8/9 Rabbit Polyclonal Antibody
Catalog #: APRab15336

Summary

Production Name	Olfactory receptor 8U1/8/9 Rabbit Polyclonal Antibody
Description	Rabbit Polyclonal Antibody
Host	Rabbit
Application	IF,ELISA
Reactivity	Human,Rat,Mouse

Performance

Conjugation	Unconjugated
Modification	Unmodified
Isotype	IgG
Clonality	Polyclonal
Form	Liquid
Storage	Store at 4°C short term. Aliquot and store at -20°C long term. Avoid freeze/thaw cycles.
Buffer	Liquid in PBS containing 50% glycerol, 0.5% BSA and 0.02% New type preservative N.
Purification	Affinity purification

Immunogen

Gene Name	OR8U1/OR8U8/OR8U9
Alternative Names	OR8U1; Olfactory receptor 8U1; OR8U8; Olfactory receptor 8U8; OR8U9; Olfactory receptor 8U9
Gene ID	219417/504189/504190
SwissProt ID	Q8NH10/P0C7N1/P0C7N5.The antiserum was produced against synthesized peptide derived from human OR8U1/8/9. AA range:158-207

Application

Dilution Ratio	IF 1:200-1:1000. ELISA: 1:10000.
Molecular Weight	

**Product Name: Olfactory receptor 8U1/8/9 Rabbit
Polyclonal Antibody
Catalog #: APRab15336**



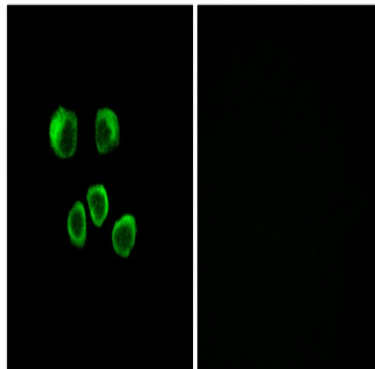
Background

olfactory receptor family 8 subfamily U member 1(OR8U1) Homo sapiens Olfactory receptors interact with odorant molecules in the nose, to initiate a neuronal response that triggers the perception of a smell. The olfactory receptor proteins are members of a large family of G-protein-coupled receptors (GPCR) arising from single coding-exon genes. Olfactory receptors share a 7-transmembrane domain structure with many neurotransmitter and hormone receptors and are responsible for the recognition and G protein-mediated transduction of odorant signals. The olfactory receptor gene family is the largest in the genome. The nomenclature assigned to the olfactory receptor genes and proteins for this organism is independent of other organisms. [provided by RefSeq, Jul 2008],function:Odorant receptor ,similarity:Belongs to the G-protein coupled receptor 1 family,.

Research Area

Olfactory transduction;

Image Data



Immunofluorescence analysis of MCF7 cells, using OR8U1/8/9 Antibody. The picture on the right is blocked with the synthesized peptide.

Note

For research use only.