

**Product Name: Olfactory receptor 4C15 Rabbit Polyclonal Antibody**  
**Catalog #: APRab15219**

---

## Summary

<b>Production Name</b>	Olfactory receptor 4C15 Rabbit Polyclonal Antibody
<b>Description</b>	Rabbit Polyclonal Antibody
<b>Host</b>	Rabbit
<b>Application</b>	IF, WB,
<b>Reactivity</b>	Human, Rat, Mouse

## Performance

<b>Conjugation</b>	Unconjugated
<b>Modification</b>	Unmodified
<b>Isotype</b>	IgG
<b>Clonality</b>	Polyclonal
<b>Form</b>	Liquid
<b>Storage</b>	Store at 4°C short term. Aliquot and store at -20°C long term. Avoid freeze/thaw cycles.
<b>Buffer</b>	Liquid in PBS containing 50% glycerol, 0.5% BSA and 0.02% New type preservative N.
<b>Purification</b>	Affinity purification

## Immunogen

<b>Gene Name</b>	OR4C15
<b>Alternative Names</b>	OR4C15; Olfactory receptor 4C15; Olfactory receptor OR11-127; Olfactory receptor OR11-134
<b>Gene ID</b>	81309.0
<b>SwissProt ID</b>	Q8NGM1. The antiserum was produced against synthesized peptide derived from human OR4C15. AA range: 261-310

## Application

<b>Dilution Ratio</b>	WB 1:500 - 1:2000. IF 1:200 - 1:1000. ELISA: 1:40000. Not yet tested in other applications.
-----------------------	---

**Product Name: Olfactory receptor 4C15 Rabbit Polyclonal Antibody**  
**Catalog #: APRab15219**

**Molecular Weight** 34kD

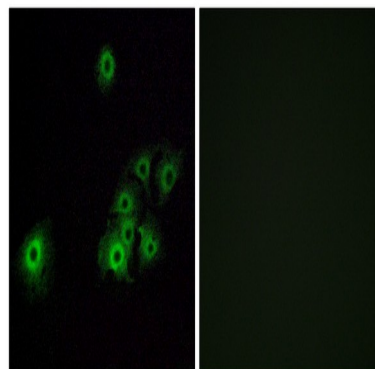
## Background

Olfactory receptors interact with odorant molecules in the nose, to initiate a neuronal response that triggers the perception of a smell. The olfactory receptor proteins are members of a large family of G-protein-coupled receptors (GPCR) arising from single coding-exon genes. Olfactory receptors share a 7-transmembrane domain structure with many neurotransmitter and hormone receptors and are responsible for the recognition and G protein-mediated transduction of odorant signals. The olfactory receptor gene family is the largest in the genome. The nomenclature assigned to the olfactory receptor genes and proteins for this organism is independent of other organisms. [provided by RefSeq, Jul 2008],function:Odorant receptor .,similarity:Belongs to the G-protein coupled receptor 1 family.,

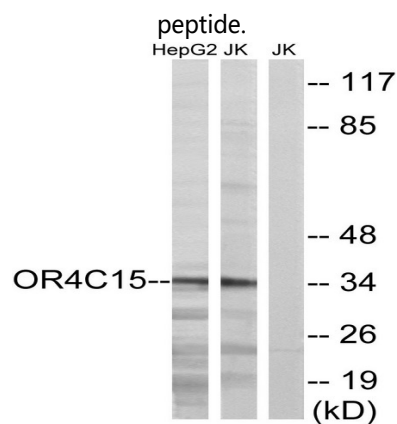
## Research Area

Olfactory transduction;

## Image Data



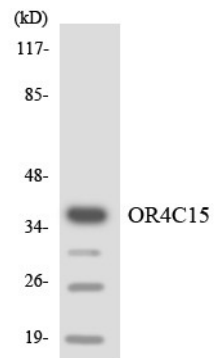
Immunofluorescence analysis of A549 cells, using OR4C15 Antibody. The picture on the right is blocked with the synthesized



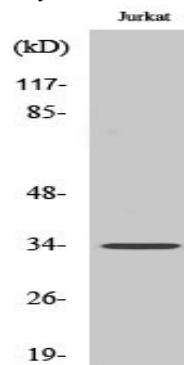
Western blot analysis of lysates from Jurkat and HepG2 cells, using OR4C15 Antibody. The lane on the right is blocked with

**Product Name: Olfactory receptor 4C15 Rabbit  
Polyclonal Antibody  
Catalog #: APRab15219**

the synthesized peptide.



Western blot analysis of the lysates from HeLa cells using OR4C15 antibody.



Western Blot analysis of various cells using Olfactory receptor 4C15 Polyclonal Antibody

## Note

For research use only.