

Product Name: Olfactory receptor 2F2 Rabbit Polyclonal Antibody
Catalog #: APRab15189

Summary

Production Name	Olfactory receptor 2F2 Rabbit Polyclonal Antibody
Description	Rabbit Polyclonal Antibody
Host	Rabbit
Application	WB
Reactivity	Human,Rat,Mouse

Performance

Conjugation	Unconjugated
Modification	Unmodified
Isotype	IgG
Clonality	Polyclonal
Form	Liquid
Storage	Store at 4°C short term. Aliquot and store at -20°C long term. Avoid freeze/thaw cycles.
Buffer	Liquid in PBS containing 50% glycerol, 0.5% BSA and 0.02% New type preservative N.
Purification	Affinity purification

Immunogen

Gene Name	OR2F2
Alternative Names	OR2F2; Olfactory receptor 2F2; Olfactory receptor 7-1; OR7-1; Olfactory receptor OR7-6
Gene ID	135948.0
SwissProt ID	O95006.The antiserum was produced against synthesized peptide derived from human OR2F2. AA range:93-142

Application

Dilution Ratio	WB 1:500-1:2000. ELISA: 1:10000.
Molecular Weight	32kD

Background

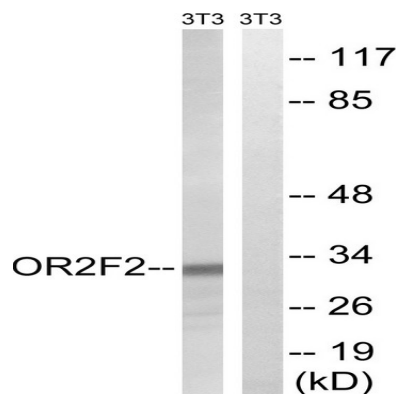
Product Name: Olfactory receptor 2F2 Rabbit Polyclonal Antibody
Catalog #: APRab15189

olfactory receptor family 2 subfamily F member 2(OR2F2) Homo sapiens Olfactory receptors interact with odorant molecules in the nose, to initiate a neuronal response that triggers the perception of a smell. The olfactory receptor proteins are members of a large family of G-protein-coupled receptors (GPCR) arising from single coding-exon genes. Olfactory receptors share a 7-transmembrane domain structure with many neurotransmitter and hormone receptors and are responsible for the recognition and G protein-mediated transduction of odorant signals. The olfactory receptor gene family is the largest in the genome. The nomenclature assigned to the olfactory receptor genes and proteins for this organism is independent of other organisms. [provided by RefSeq, Jul 2008],function:Odorant receptor ,similarity:Belongs to the G-protein coupled receptor 1 family.,

Research Area

Olfactory transduction;

Image Data



Note

For research use only.