

**Product Name: Olfactory receptor 13D1 Rabbit Polyclonal Antibody**  
**Catalog #: APRab15161**

---

## Summary

<b>Production Name</b>	Olfactory receptor 13D1 Rabbit Polyclonal Antibody
<b>Description</b>	Rabbit Polyclonal Antibody
<b>Host</b>	Rabbit
<b>Application</b>	WB
<b>Reactivity</b>	Human,Rat,Mouse

## Performance

<b>Conjugation</b>	Unconjugated
<b>Modification</b>	Unmodified
<b>Isotype</b>	IgG
<b>Clonality</b>	Polyclonal
<b>Form</b>	Liquid
<b>Storage</b>	Store at 4°C short term. Aliquot and store at -20°C long term. Avoid freeze/thaw cycles.
<b>Buffer</b>	Liquid in PBS containing 50% glycerol, 0.5% BSA and 0.02% New type preservative N.
<b>Purification</b>	Affinity purification

## Immunogen

<b>Gene Name</b>	OR13D1
<b>Alternative Names</b>	OR13D1; Olfactory receptor 13D1; Olfactory receptor OR9-15
<b>Gene ID</b>	286365.0
<b>SwissProt ID</b>	Q8NGV5.The antiserum was produced against synthesized peptide derived from human OR13D1. AA range:231-280

## Application

<b>Dilution Ratio</b>	WB 1:500-1:2000. ELISA: 1:20000.
<b>Molecular Weight</b>	33kD

## Background

---

**Product Name: Olfactory receptor 13D1 Rabbit  
Polyclonal Antibody  
Catalog #: APRab15161**

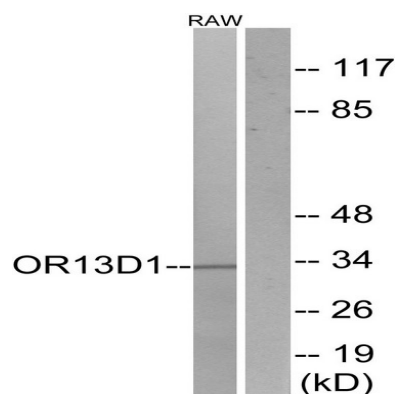
---

Olfactory receptors interact with odorant molecules in the nose, to initiate a neuronal response that triggers the perception of a smell. The olfactory receptor proteins are members of a large family of G-protein-coupled receptors (GPCR) arising from single coding-exon genes. Olfactory receptors share a 7-transmembrane domain structure with many neurotransmitter and hormone receptors and are responsible for the recognition and G protein-mediated transduction of odorant signals. The olfactory receptor gene family is the largest in the genome. The nomenclature assigned to the olfactory receptor genes and proteins for this organism is independent of other organisms. [provided by RefSeq, Jul 2008],caution:It is uncertain whether Met-1 or Met-33 is the initiator.,function:Odorant receptor ,similarity:Belongs to the G-protein coupled receptor 1 family,.

### Research Area

Olfactory transduction;

### Image Data



### Note

For research use only.