

Product Name: Olfactory receptor 10A4 Rabbit Polyclonal Antibody
Catalog #: APRab15126

Summary

Production Name	Olfactory receptor 10A4 Rabbit Polyclonal Antibody
Description	Rabbit Polyclonal Antibody
Host	Rabbit
Application	IF, WB, ELISA
Reactivity	Human, Rat, Mouse

Performance

Conjugation	Unconjugated
Modification	Unmodified
Isotype	IgG
Clonality	Polyclonal
Form	Liquid
Storage	Store at 4°C short term. Aliquot and store at -20°C long term. Avoid freeze/thaw cycles.
Buffer	Liquid in PBS containing 50% glycerol, 0.5% BSA and 0.02% New type preservative N.
Purification	Affinity purification

Immunogen

Gene Name	OR10A4
Alternative Names	OR10A4; OR10A4P; Olfactory receptor 10A4; HP2; Olfactory receptor-like protein JCG5
Gene ID	283297.0
SwissProt ID	Q9H209. The antiserum was produced against synthesized peptide derived from human OR10A4. AA range: 261-310

Application

Dilution Ratio	WB 1:500 - 1:2000. IF 1:200 - 1:1000. ELISA: 1:40000. Not yet tested in other applications.
Molecular Weight	38kD

Product Name: Olfactory receptor 10A4 Rabbit Polyclonal Antibody
Catalog #: APRab15126

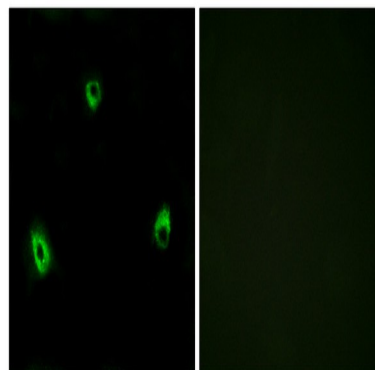
Background

Olfactory receptors interact with odorant molecules in the nose, to initiate a neuronal response that triggers the perception of a smell. The olfactory receptor proteins are members of a large family of G-protein-coupled receptors (GPCR) arising from single coding-exon genes. Olfactory receptors share a 7-transmembrane domain structure with many neurotransmitter and hormone receptors and are responsible for the recognition and G protein-mediated transduction of odorant signals. The olfactory receptor gene family is the largest in the genome. The nomenclature assigned to the olfactory receptor genes and proteins for this organism is independent of other organisms. [provided by RefSeq, Jul 2008],function:Odorant receptor (Potential). May be involved in taste perception.,miscellaneous:The sequence shown here is derived from an EMBL/GenBank/DDBJ third party annotation (TPA) entry.,similarity:Belongs to the G-protein coupled receptor 1 family.,tissue specificity:Expressed in the tongue.,

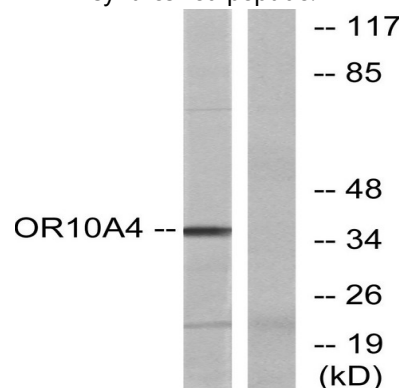
Research Area

Olfactory transduction;

Image Data

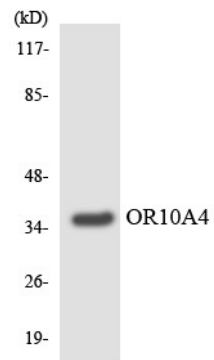


Immunofluorescence analysis of MCF7 cells, using OR10A4 Antibody. The picture on the right is blocked with the synthesized peptide.



**Product Name: Olfactory receptor 10A4 Rabbit
Polyclonal Antibody
Catalog #: APRab15126**

Western blot analysis of lysates from COLO cells, using OR10A4 Antibody. The lane on the right is blocked with the synthesized peptide.



Western blot analysis of the lysates from HUVECcells using OR10A4 antibody.

Note

For research use only.