

Product Name: OGCP Rabbit Polyclonal Antibody
Catalog #: APRab15118



Summary

Production Name	OGCP Rabbit Polyclonal Antibody
Description	Rabbit Polyclonal Antibody
Host	Rabbit
Application	WB
Reactivity	Human,Mouse,Rat

Performance

Conjugation	Unconjugated
Modification	Unmodified
Isotype	IgG
Clonality	Polyclonal
Form	Liquid
Storage	Store at 4°C short term. Aliquot and store at -20°C long term. Avoid freeze/thaw cycles.
Buffer	Liquid in PBS containing 50% glycerol, 0.5% BSA and 0.02% New type preservative N.
Purification	Affinity purification

Immunogen

Gene Name	SLC25A11
Alternative Names	SLC25A11; SLC20A4; Mitochondrial 2-oxoglutarate/malate carrier protein; OGCP; Solute carrier family 25 member 11
Gene ID	8402.0
SwissProt ID	Q02978.The antiserum was produced against synthesized peptide derived from human SLC25A11. AA range:132-181

Application

Dilution Ratio	WB 1:500-1:2000. ELISA: 1:10000.
Molecular Weight	35kD

Background

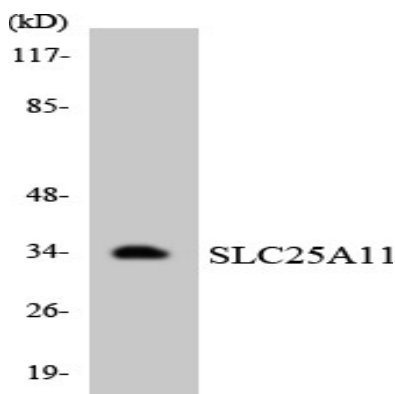
Product Name: OGCP Rabbit Polyclonal Antibody
Catalog #: APRab15118



The oxoglutarate/malate carrier transports 2-oxoglutarate across the inner membranes of mitochondria in an electroneutral exchange for malate or other dicarboxylic acids (summary by Iacobazzi et al., 1992 [PubMed 1457818]). [supplied by OMIM, Jan 2011], function: Catalyzes the transport of 2-oxoglutarate across the inner mitochondrial membrane in an electroneutral exchange for malate or other dicarboxylic acids, and plays an important role in several metabolic processes, including the malate-aspartate shuttle, the oxoglutarate/isocitrate shuttle, in gluconeogenesis from lactate, and in nitrogen metabolism., similarity: Belongs to the mitochondrial carrier family., similarity: Contains 3 Solcar repeats.,

Research Area

Image Data



Western blot analysis of the lysates from HepG2 cells using SLC25A11 antibody.

Note

For research use only.