

Product Name: OCT3 Rabbit Polyclonal Antibody
Catalog #: APRab15103



Summary

Production Name	OCT3 Rabbit Polyclonal Antibody
Description	Rabbit Polyclonal Antibody
Host	Rabbit
Application	WB,ELISA
Reactivity	Human,Rat,Mouse

Performance

Conjugation	Unconjugated
Modification	Unmodified
Isotype	IgG
Clonality	Polyclonal
Form	Liquid
Storage	Store at 4°C short term. Aliquot and store at -20°C long term. Avoid freeze/thaw cycles.
Buffer	Liquid in PBS containing 50% glycerol, 0.5% BSA and 0.02% New type preservative N.
Purification	Affinity purification

Immunogen

Gene Name	SLC22A3
Alternative Names	SLC22A3; EMTH; OCT3; Solute carrier family 22 member 3; Extraneuronal monoamine transporter; EMT; Organic cation transporter 3
Gene ID	6581.0
SwissProt ID	O75751.The antiserum was produced against synthesized peptide derived from human SLC22A3. AA range:275-324

Application

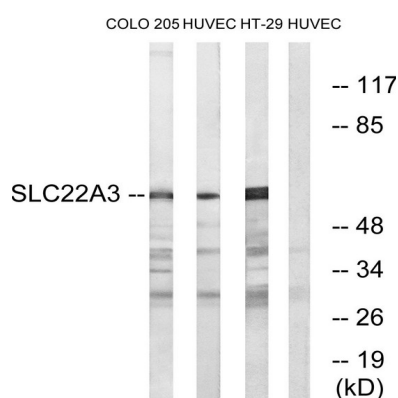
Dilution Ratio	WB 1:500 - 1:2000. ELISA: 1:10000
Molecular Weight	61kD

Background

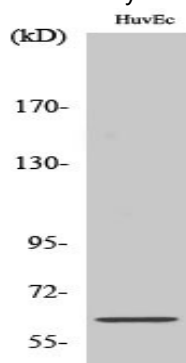
Polyspecific organic cation transporters in the liver, kidney, intestine, and other organs are critical for elimination of many endogenous small organic cations as well as a wide array of drugs and environmental toxins. This gene is one of three similar cation transporter genes located in a cluster on chromosome 6. The encoded protein contains twelve putative transmembrane domains and is a plasma integral membrane protein. [provided by RefSeq, Jul 2008],function:Mediates potential-dependent transport of a variety of organic cations. May play a significant role in the disposition of cationic neurotoxins and neurotransmitters in the brain.,similarity:Belongs to the major facilitator superfamily. Organic cation transporter family.,tissue specificity:Expressed in placenta, skeletal muscle, prostate, aorta, liver, fetal lung, salivary gland, adrenal gland, kidney and brain cortex. No expression detected in spleen.,

Research Area

Image Data



Western blot analysis of lysates from HUVEC, COLO, and HT-29 cells, using SLC22A3 Antibody. The lane on the right is blocked with the synthesized peptide.



Western Blot analysis of various cells using OCT3 Polyclonal Antibody

Product Name: OCT3 Rabbit Polyclonal Antibody
Catalog #: APRab15103



Note

For research use only.