

**Product Name: Ob Rabbit Polyclonal Antibody**  
**Catalog #: APRab15086**

---

## Summary

<b>Production Name</b>	Ob Rabbit Polyclonal Antibody
<b>Description</b>	Rabbit Polyclonal Antibody
<b>Host</b>	Rabbit
<b>Application</b>	IHC,ELISA
<b>Reactivity</b>	Human,Mouse,Rat

## Performance

<b>Conjugation</b>	Unconjugated
<b>Modification</b>	Unmodified
<b>Isotype</b>	IgG
<b>Clonality</b>	Polyclonal
<b>Form</b>	Liquid
<b>Storage</b>	Store at 4°C short term. Aliquot and store at -20°C long term. Avoid freeze/thaw cycles.
<b>Buffer</b>	Liquid in PBS containing 50% glycerol, 0.5% BSA and 0.02% New type preservative N.
<b>Purification</b>	Affinity purification

## Immunogen

<b>Gene Name</b>	LEP OB OBS
<b>Alternative Names</b>	Leptin (Obese protein;Obesity factor)
<b>Gene ID</b>	3952.0
<b>SwissProt ID</b>	P41159.Synthetic peptide from human protein at AA range: 10-50

## Application

<b>Dilution Ratio</b>	IHC 1:50-200, ELISA 1:10000-20000.
<b>Molecular Weight</b>	

## Background

This gene encodes a protein that is secreted by white adipocytes, and which plays a major role in the regulation of body

---

**Product Name: Ob Rabbit Polyclonal Antibody**  
**Catalog #: APRab15086**

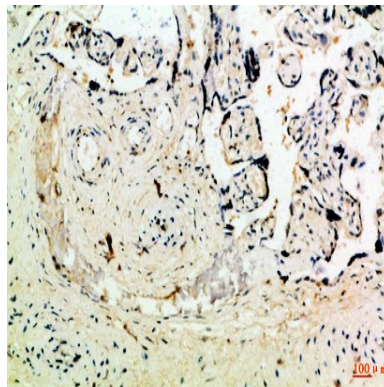


weight. This protein, which acts through the leptin receptor, functions as part of a signaling pathway that can inhibit food intake and/or regulate energy expenditure to maintain constancy of the adipose mass. This protein also has several endocrine functions, and is involved in the regulation of immune and inflammatory responses, hematopoiesis, angiogenesis and wound healing. Mutations in this gene and/or its regulatory regions cause severe obesity, and morbid obesity with hypogonadism. This gene has also been linked to type 2 diabetes mellitus development. [provided by RefSeq, Jul 2008],disease:Defects in LEP may be a cause of autosomal recessive obesity [MIM:601665].,function:May function as part of a signaling pathway that acts to regulate the size of the body fat depot. An increase in the level of LEP may act directly or indirectly on the CNS to inhibit food intake and/or regulate energy expenditure as part of a homeostatic mechanism to maintain constancy of the adipose mass.,online information:Leptin entry,similarity:Belongs to the leptin family.,subunit:Interacts with SIGLEC6.,

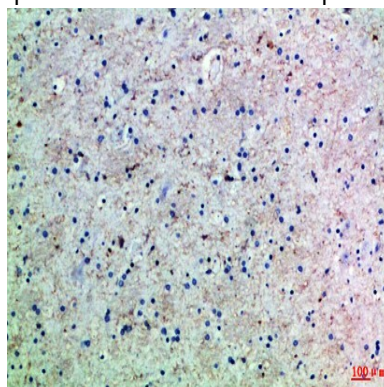
## Research Area

Cytokine-cytokine receptor interaction;Neuroactive ligand-receptor interaction;Jak\_STAT;Adipocytokine;

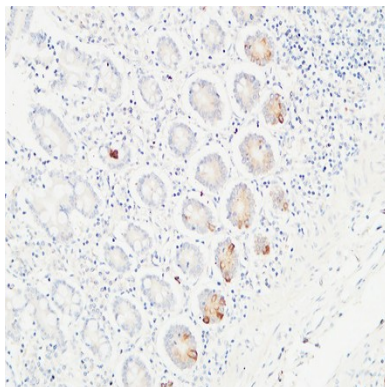
## Image Data



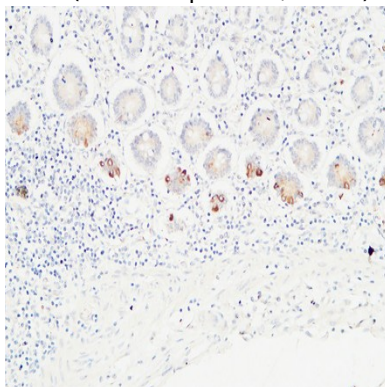
Immunohistochemical analysis of paraffin-embedded Human-placenta, antibody was diluted at 1:100



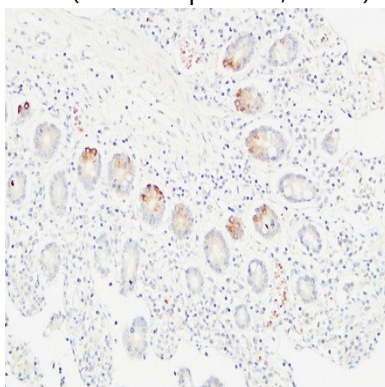
Immunohistochemical analysis of paraffin-embedded Human-brain, antibody was diluted at 1:100



Immunohistochemical analysis of paraffin-embedded Human colon. 1, Antibody was diluted at 1:100 (4°,overnight) . 2, High-pressure and temperature EDTA, pH8.0 was used for antigen retrieval. 3,Secondary antibody was diluted at 1:200 (room temperature, 30min) .



Immunohistochemical analysis of paraffin-embedded Human colon. 1, Antibody was diluted at 1:100 (4°,overnight) . 2, High-pressure and temperature EDTA, pH8.0 was used for antigen retrieval. 3,Secondary antibody was diluted at 1:200 (room temperature, 30min) .



Immunohistochemical analysis of paraffin-embedded Human colon. 1, Antibody was diluted at 1:100 (4°,overnight) . 2, High-pressure and temperature EDTA, pH8.0 was used for antigen retrieval. 3,Secondary antibody was diluted at 1:200 (room temperature, 30min) .

**Product Name: Ob Rabbit Polyclonal Antibody**  
**Catalog #: APRab15086**



---

**Note**

For research use only.