

Summary

Production Name	NY-CO-8 Rabbit Polyclonal Antibody
Description	Rabbit Polyclonal Antibody
Host	Rabbit
Application	IHC,ELISA
Reactivity	Human,Mouse

Performance

Conjugation	Unconjugated
Modification	Unmodified
Isotype	IgG
Clonality	Polyclonal
Form	Liquid
Storage	Store at 4°C short term. Aliquot and store at -20°C long term. Avoid freeze/thaw cycles.
Buffer	Liquid in PBS containing 50% glycerol, 0.5% BSA and 0.02% New type preservative N.
Purification	Affinity purification

Immunogen

Gene Name	SDCCAG8
Alternative Names	SDCCAG8; CCCAP; NPHP10; HSPC085; Serologically defined colon cancer antigen 8; Antigen NY-CO-8; Centrosomal colon cancer autoantigen protein; hCCCAP
Gene ID	10806.0
SwissProt ID	Q86SQ7.Synthesized peptide derived from NY-CO-8 . at AA range: 520-600

Application

Dilution Ratio	IHC 1:100-1:300 ELISA: 1:20000
Molecular Weight	

Background

This gene encodes a centrosome associated protein. This protein may be involved in organizing the centrosome during

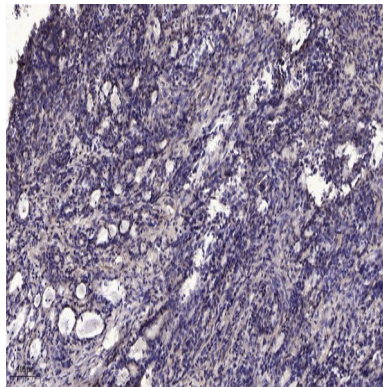
Product Name: NY-CO-8 Rabbit Polyclonal Antibody
Catalog #: APRab15003



interphase and mitosis. Mutations in this gene are associated with retinal-renal ciliopathy. [provided by RefSeq, Oct 2010],subunit:Homodimer.,tissue specificity:Expressed in thymus, prostate, testis, ovary, small intestine, colon, mucosa, colon and renal cancer tumors.,

Research Area

Image Data



Immunohistochemical analysis of paraffin-embedded human Gastric adenocarcinoma. 1, Antibody was diluted at 1:200 (4° overnight) . 2, Tris-EDTA,pH9.0 was used for antigen retrieval. 3,Secondary antibody was diluted at 1:200 (room temperature, 45min) .

Note

For research use only.