
Summary

Production Name	Nup160 Rabbit Polyclonal Antibody
Description	Rabbit Polyclonal Antibody
Host	Rabbit
Application	WB,ELISA
Reactivity	Human,Mouse

Performance

Conjugation	Unconjugated
Modification	Unmodified
Isotype	IgG
Clonality	Polyclonal
Form	Liquid
Storage	Store at 4°C short term. Aliquot and store at -20°C long term. Avoid freeze/thaw cycles.
Buffer	Liquid in PBS containing 50% glycerol, 0.5% BSA and 0.02% New type preservative N.
Purification	Affinity purification

Immunogen

Gene Name	NUP160
Alternative Names	NUP160; KIAA0197; NUP120; Nuclear pore complex protein Nup160; 160 kDa nucleoporin; Nucleoporin Nup160
Gene ID	23279.0
SwissProt ID	Q12769.The antiserum was produced against synthesized peptide derived from human NUP160. AA range:392-441

Application

Dilution Ratio	WB 1:500 - 1:2000. ELISA: 1:20000
Molecular Weight	140kD

Product Name: Nup160 Rabbit Polyclonal Antibody
Catalog #: APRab14980

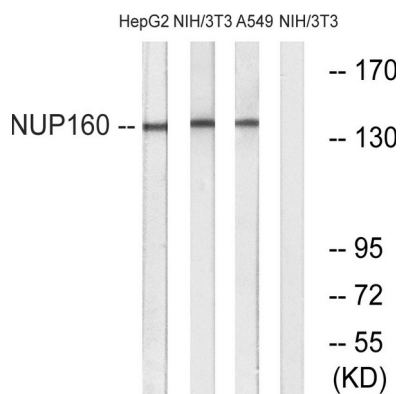


Background

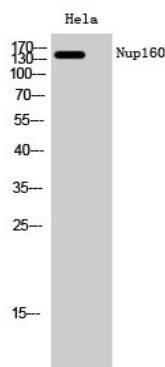
nucleoporin 160(NUP160) Homo sapiens NUP160 is 1 of up to 60 proteins that make up the 120-MD nuclear pore complex, which mediates nucleoplasmic transport.[supplied by OMIM, Apr 2004],caution:It is uncertain whether Met-1 or Met-35 is the initiator.,function:Involved in poly(A)+ RNA transport.,sequence caution:Probable cloning artifact. Aberrant splice sites.,subunit:Forms part of the Nup160 subcomplex in the nuclear pore which is composed of Nup160, Nup133, Nup107 and Nup96. This complex plays a role in RNA export and in tethering Nup98 and Nup153 to the nucleus.,

Research Area

Image Data



Western blot analysis of lysates from NIH/3T3, A549, and HepG2 cells, using NUP160 Antibody. The lane on the right is blocked with the synthesized peptide.



Western Blot analysis of HeLa cells using Nup160 Polyclonal Antibody diluted at 1 : 2000 cells nucleus extracted by MinuteTM Cytoplasmic and Nuclear Fractionation kit (SC-003, Inventbiotech, MN, USA) .

Note

For research use only.