

Summary

Production Name	NUMB Rabbit Polyclonal Antibody
Description	Rabbit Polyclonal Antibody
Host	Rabbit
Application	WB
Reactivity	Human,Mouse,Rat

Performance

Conjugation	Unconjugated
Modification	Unmodified
Isotype	IgG
Clonality	Polyclonal
Form	Liquid
Storage	Store at 4°C short term. Aliquot and store at -20°C long term. Avoid freeze/thaw cycles.
Buffer	Liquid in PBS containing 50% glycerol, 0.5% BSA and 0.02% New type preservative N.
Purification	Affinity purification

Immunogen

Gene Name	NUMB
Alternative Names	NUMB; Protein numb homolog; h-Numb; Protein S171
Gene ID	8650.0
SwissProt ID	P49757.Synthesized peptide derived from the Internal region of human NUMB.

Application

Dilution Ratio	WB 1:500-2000; ELISA 1:5000-20000
Molecular Weight	70kD

Background

The protein encoded by this gene plays a role in the determination of cell fates during development. The encoded protein, whose degradation is induced in a proteasome-dependent manner by MDM2, is a membrane-bound protein that has been

Product Name: NUMB Rabbit Polyclonal Antibody
Catalog #: APRab14977

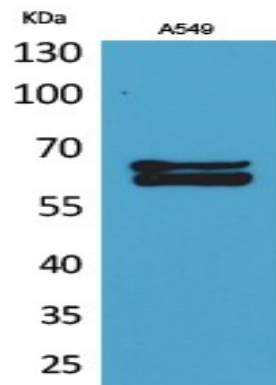


shown to associate with EPS15, LNX1, and NOTCH1. Alternative splicing results in multiple transcript variants. [provided by RefSeq, Feb 2016],function:Implicated in the control of cell fate decisions during development.,PTM:Isoform 1 and isoform 2 are ubiquitinated by LNX leading to their subsequent proteasomal degradation (By similarity). Ubiquitinated; mediated by SIAH1 and leading to its subsequent proteasomal degradation.,sequence caution:Intron retention.,similarity:Contains 1 PID domain.,subunit:Interacts with EPS15, LNX and NOTCH1. May interact with DUOXA1. Interacts with RALBP1 in a complex also containing EPN1 and TFAP2A during interphase and mitosis.,

Research Area

Notch;

Image Data



Western Blot analysis of A549 cells using NUMB Polyclonal Antibody.. Secondary antibody was diluted at 1:20000

Note

For research use only.