
Summary

Production Name	NuMA Rabbit Polyclonal Antibody
Description	Rabbit Polyclonal Antibody
Host	Rabbit
Application	WB,IHC,
Reactivity	Human,Rat,Mouse

Performance

Conjugation	Unconjugated
Modification	Unmodified
Isotype	IgG
Clonality	Polyclonal
Form	Liquid
Storage	Store at 4°C short term. Aliquot and store at -20°C long term. Avoid freeze/thaw cycles.
Buffer	Liquid in PBS containing 50% glycerol, 0.5% BSA and 0.02% New type preservative N.
Purification	Affinity purification

Immunogen

Gene Name	NUMA1
Alternative Names	NUMA1; NUMA; Nuclear mitotic apparatus protein 1; NuMA protein; SP-H antigen
Gene ID	4926.0
SwissProt ID	Q14980.The antiserum was produced against synthesized peptide derived from human NUMA1. AA range:334-383

Application

Dilution Ratio	WB 1:500 - 1:2000. IHC 1:100 - 1:300. ELISA: 1:5000..
Molecular Weight	240kD

Background

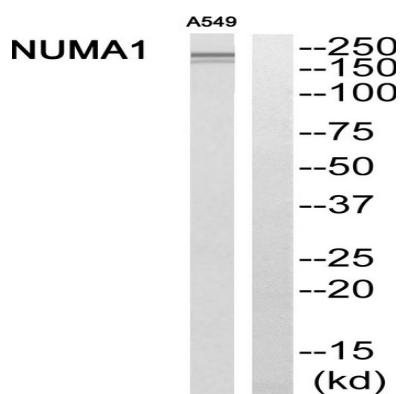
Product Name: NuMA Rabbit Polyclonal Antibody
Catalog #: APRab14975



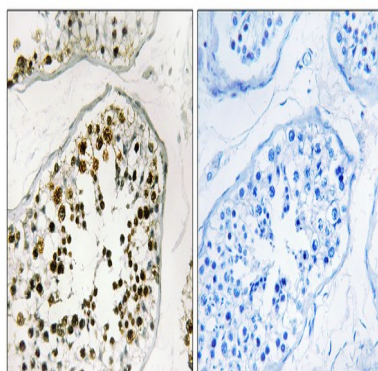
This gene encodes a large protein that forms a structural component of the nuclear matrix. The encoded protein interacts with microtubules and plays a role in the formation and organization of the mitotic spindle during cell division. Chromosomal translocation of this gene with the RARA (retinoic acid receptor, alpha) gene on chromosome 17 have been detected in patients with acute promyelocytic leukemia. Alternative splicing results in multiple transcript variants. [provided by RefSeq, Nov 2013],function:May be a structural component of the nucleus.,subcellular location:Dissociates from condensing chromosomes during early prophase, before the complete disintegration of the nuclear lamina. As mitosis progresses it reassociates with telophase chromosomes very early during nuclear reformation, before substantial accumulation of lamins on chromosomal surfaces is evident.,

Research Area

Image Data

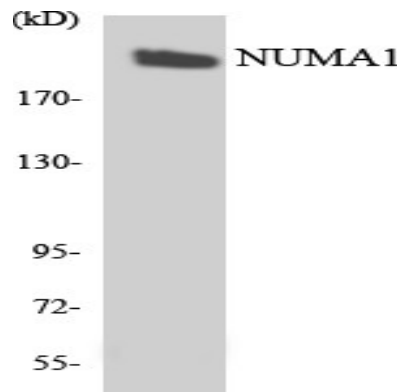


Western blot analysis of NUMA1 Antibody. The lane on the right is blocked with the NUMA1 peptide.

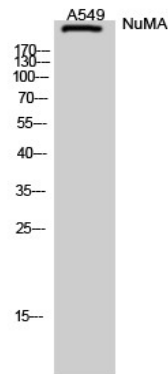


Immunohistochemistry analysis of paraffin-embedded human testis, using NUMA1 Antibody. The lane on the right is blocked with the NUMA1 peptide.

Product Name: NuMA Rabbit Polyclonal Antibody
Catalog #: APRab14975



Western blot analysis of the lysates from K562 cells using NUMA1 antibody.



Western Blot analysis of A549 cells using NuMA Polyclonal Antibody diluted at 1: 2000

Note

For research use only.