

Product Name: NUFP2 Rabbit Polyclonal Antibody
Catalog #: APRab14974



Summary

Production Name	NUFP2 Rabbit Polyclonal Antibody
Description	Rabbit Polyclonal Antibody
Host	Rabbit
Application	WB
Reactivity	Human,Mouse

Performance

Conjugation	Unconjugated
Modification	Unmodified
Isotype	IgG
Clonality	Polyclonal
Form	Liquid
Storage	Store at 4°C short term. Aliquot and store at -20°C long term. Avoid freeze/thaw cycles.
Buffer	Liquid in PBS containing 50% glycerol, and 0.02% New type preservative N.
Purification	Affinity purification

Immunogen

Gene Name	NUFIP2 KIAA1321 PIG1
Alternative Names	
Gene ID	57532.0
SwissProt ID	Q7Z417.Synthesized peptide derived from human protein . at AA range: 180-260

Application

Dilution Ratio	WB 1:500-2000 ELISA 1:5000-20000
Molecular Weight	76kD

Background

function: Binds RNA.,PTM: Phosphorylated upon DNA damage, probably by ATM or ATR.,subcellular location: Distribution is cell cycle-modulated, being cytoplasmic in the G2/M phase and accumulating in nucleus during the G1

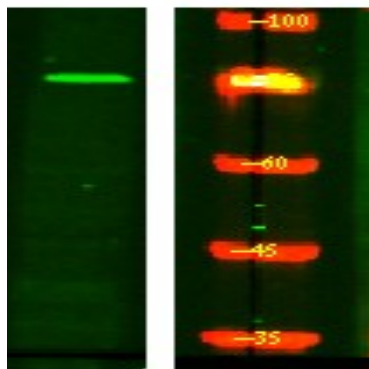
Product Name: NUFP2 Rabbit Polyclonal Antibody
Catalog #: APRab14974



phase.,subunit:Interacts with FMRP.,function:Binds RNA.,PTM:Phosphorylated upon DNA damage, probably by ATM or ATR.,subcellular location:Distribution is cell cycle-modulated, being cytoplasmic in the G2/M phase and accumulating in nucleus during the G1 phase.,subunit:Interacts with FMRP.,

Research Area

Image Data



Western Blot analysis of HeLa lysis, using primary antibody at 1:1000 dilution. Secondary antibody was diluted at 1:10000

Note

For research use only.