

## Summary

<b>Production Name</b>	NUCKS Rabbit Polyclonal Antibody
<b>Description</b>	Rabbit Polyclonal Antibody
<b>Host</b>	Rabbit
<b>Application</b>	IHC,ELISA
<b>Reactivity</b>	Human,Mouse,Rat

## Performance

<b>Conjugation</b>	Unconjugated
<b>Modification</b>	Unmodified
<b>Isotype</b>	IgG
<b>Clonality</b>	Polyclonal
<b>Form</b>	Liquid
<b>Storage</b>	Store at 4°C short term. Aliquot and store at -20°C long term. Avoid freeze/thaw cycles.
<b>Buffer</b>	Liquid in PBS containing 50% glycerol, 0.5% BSA and 0.02% New type preservative N.
<b>Purification</b>	Affinity purification

## Immunogen

<b>Gene Name</b>	NUCKS1
<b>Alternative Names</b>	NUCKS1; NUCKS; JC7; Nuclear ubiquitous casein and cyclin-dependent kinase substrate 1; P1
<b>Gene ID</b>	64710.0
<b>SwissProt ID</b>	Q9H1E3.The antiserum was produced against synthesized peptide derived from human NUCKS1. AA range:28-77

## Application

<b>Dilution Ratio</b>	IHC 1:100-1:300 ELISA: 1:10000
<b>Molecular Weight</b>	

## Background

**Product Name: NUCKS Rabbit Polyclonal Antibody**  
**Catalog #: APRab14952**

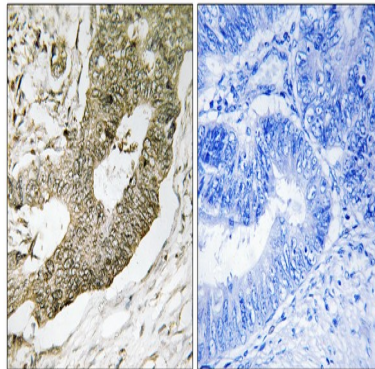


---

This gene encodes a nuclear protein that is highly conserved in vertebrates. The conserved regions of the protein contain several consensus phosphorylation sites for casein kinase II and cyclin-dependent kinases, two putative nuclear localization signals, and a basic DNA-binding domain. It is phosphorylated in vivo by Cdk1 during mitosis of the cell cycle. [provided by RefSeq, Aug 2010],PTM:Phosphorylated by CDK1 and casein kinase. Phosphorylated upon DNA damage, probably by ATM or ATR.,sequence caution:Translated as Arg.,

## Research Area

## Image Data



Immunohistochemistry analysis of paraffin-embedded human colon carcinoma tissue, using NUCKS1 Antibody. The picture on the right is blocked with the synthesized peptide.

## Note

For research use only.