

## Summary

<b>Production Name</b>	NTT5 Rabbit Polyclonal Antibody
<b>Description</b>	Rabbit Polyclonal Antibody
<b>Host</b>	Rabbit
<b>Application</b>	IHC,ELISA
<b>Reactivity</b>	Human,Rat,Mouse

## Performance

<b>Conjugation</b>	Unconjugated
<b>Modification</b>	Unmodified
<b>Isotype</b>	IgG
<b>Clonality</b>	Polyclonal
<b>Form</b>	Liquid
<b>Storage</b>	Store at 4°C short term. Aliquot and store at -20°C long term. Avoid freeze/thaw cycles.
<b>Buffer</b>	Liquid in PBS containing 50% glycerol, 0.5% BSA and 0.02% New type preservative N.
<b>Purification</b>	Affinity purification

## Immunogen

<b>Gene Name</b>	SLC6A16
<b>Alternative Names</b>	SLC6A16; NTT5; Orphan sodium- and chloride-dependent neurotransmitter transporter NTT5; Solute carrier family 6 member 16
<b>Gene ID</b>	28968.0
<b>SwissProt ID</b>	Q9GZN6.The antiserum was produced against synthesized peptide derived from human SLC6A16. AA range:233-282

## Application

<b>Dilution Ratio</b>	IHC 1:100-1:300 ELISA: 1:40000
<b>Molecular Weight</b>	

## Background

**Product Name: NTT5 Rabbit Polyclonal Antibody**  
**Catalog #: APRab14935**

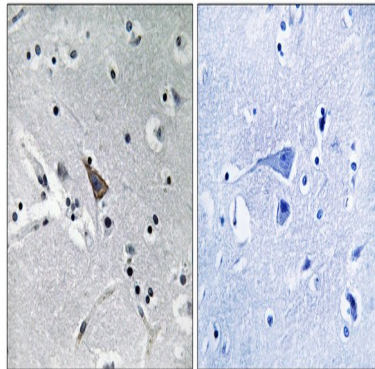


---

SLC6A16 shows structural characteristics of an Na(+)- and Cl(-)-dependent neurotransmitter transporter, including 12 transmembrane (TM) domains, intracellular N and C termini, and large extracellular loops containing multiple N-glycosylation sites.[supplied by OMIM, Mar 2008],similarity:Belongs to the sodium:neurotransmitter symporter (SNF) family.,tissue specificity:Highly expressed in peripheral tissues, particularly in testis, pancreas, and prostate.,

## Research Area

## Image Data



Immunohistochemistry analysis of paraffin-embedded human brain, using SLC6A16 Antibody. The picture on the right is blocked with the synthesized peptide.

## Note

For research use only.