

## Summary

<b>Production Name</b>	NTF2 Rabbit Polyclonal Antibody
<b>Description</b>	Rabbit Polyclonal Antibody
<b>Host</b>	Rabbit
<b>Application</b>	WB,IHC,ELISA
<b>Reactivity</b>	Human,Mouse,Rat

## Performance

<b>Conjugation</b>	Unconjugated
<b>Modification</b>	Unmodified
<b>Isotype</b>	IgG
<b>Clonality</b>	Polyclonal
<b>Form</b>	Liquid
<b>Storage</b>	Store at 4°C short term. Aliquot and store at -20°C long term. Avoid freeze/thaw cycles.
<b>Buffer</b>	Liquid in PBS containing 50% glycerol, 0.5% BSA and 0.02% New type preservative N.
<b>Purification</b>	Affinity purification

## Immunogen

<b>Gene Name</b>	NUTF2
<b>Alternative Names</b>	NUTF2; NTF2; Nuclear transport factor 2; NTF-2; Placental protein 15; PP15
<b>Gene ID</b>	10204.0
<b>SwissProt ID</b>	P61970.The antiserum was produced against synthesized peptide derived from human NUTF2. AA range:67-116

## Application

<b>Dilution Ratio</b>	WB 1:500 - 1:2000. IHC 1:100 - 1:300. ELISA: 1:20000..
<b>Molecular Weight</b>	15kD

## Background

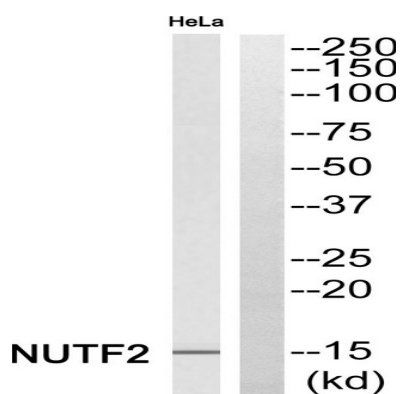
**Product Name: NTF2 Rabbit Polyclonal Antibody**  
**Catalog #: APRab14927**



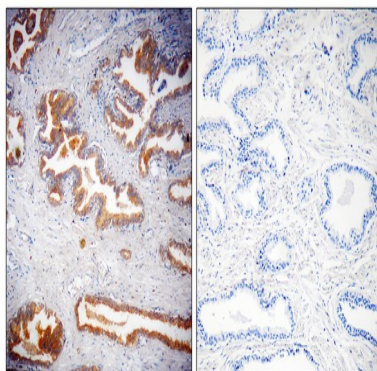
This gene encodes a cytosolic factor that facilitates protein transport into the nucleus. The encoded protein is required for nuclear import of the small Ras-like GTPase, Ran which is involved in numerous cellular processes. This protein also interacts with the nuclear pore complex glycoprotein p62. [provided by RefSeq, Apr 2016],function:Facilitates protein transport into the nucleus. Interacts with the nucleoporin p62 and with Ran. Acts at a relatively late stage of nuclear protein import, subsequent to the initial docking of nuclear import ligand at the nuclear envelope. Could be part of a multicomponent system of cytosolic factors that assemble at the pore complex during nuclear import.,similarity:Contains 1 NTF2 domain.,subunit:Homodimer.,

## Research Area

## Image Data

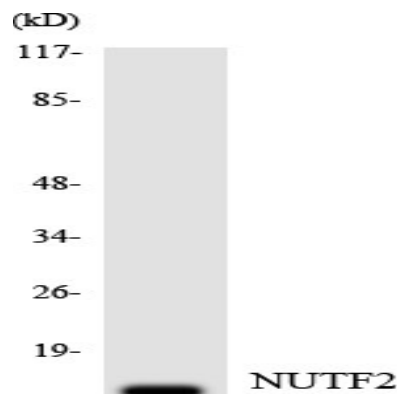


Western blot analysis of NUTF2 Antibody. The lane on the right is blocked with the NUTF2 peptide.

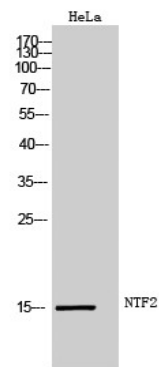


Immunohistochemistry analysis of paraffin-embedded human prostate, using NUTF2 Antibody. The lane on the right is blocked with the NUTF2 peptide.

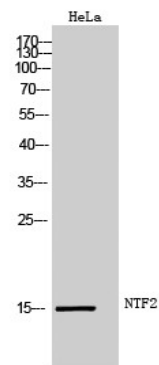
**Product Name: NTF2 Rabbit Polyclonal Antibody**  
**Catalog #: APRab14927**



Western blot analysis of the lysates from HT-29 cells using NTF2 antibody.



Western Blot analysis of HeLa cells using NTF2 Polyclonal Antibody



Western Blot analysis of HeLa cells using NTF2 Polyclonal Antibody

## Note

For research use only.