
Summary

Production Name	NT-3 Rabbit Polyclonal Antibody
Description	Rabbit Polyclonal Antibody
Host	Rabbit
Application	IHC,ELISA
Reactivity	Human,Mouse,Rat

Performance

Conjugation	Unconjugated
Modification	Unmodified
Isotype	IgG
Clonality	Polyclonal
Form	Liquid
Storage	Store at 4°C short term. Aliquot and store at -20°C long term. Avoid freeze/thaw cycles.
Buffer	Liquid in PBS containing 50% glycerol, 0.5% BSA and 0.02% New type preservative N.
Purification	Affinity purification

Immunogen

Gene Name	NTF3
Alternative Names	Neurotrophin-3 (NT-3;HDNF;Nerve growth factor 2;NGF-2;Neurotrophic factor)
Gene ID	4908.0
SwissProt ID	P20783.Synthetic peptide from human protein at AA range: 180-230

Application

Dilution Ratio	IHC 1:50-200, ELISA 1:10000-20000.
Molecular Weight	

Background

The protein encoded by this gene is a member of the neurotrophin family, that controls survival and differentiation of

Product Name: NT-3 Rabbit Polyclonal Antibody
Catalog #: APRab14917

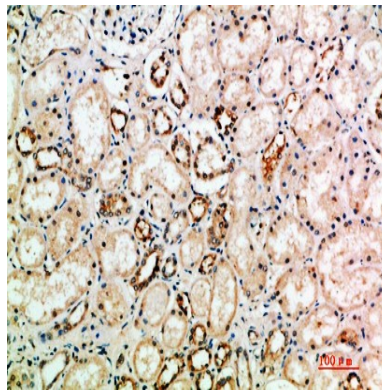


mammalian neurons. This protein is closely related to both nerve growth factor and brain-derived neurotrophic factor. It may be involved in the maintenance of the adult nervous system, and may affect development of neurons in the embryo when it is expressed in human placenta. NTF3-deficient mice generated by gene targeting display severe movement defects of the limbs. The mature peptide of this protein is identical in all mammals examined including human, pig, rat and mouse. [provided by RefSeq, Jul 2008],function:Seems to promotes the survival of visceral and proprioceptive sensory neurons.,polymorphism:Variant Glu-76 (frequently reported as Glu-63) was thought to be associated with severe forms of schizophrenia. This does not seem to be the case.,similarity:Belongs to the NGF-beta family.,tissue specificity:Brain and peripheral tissues.,

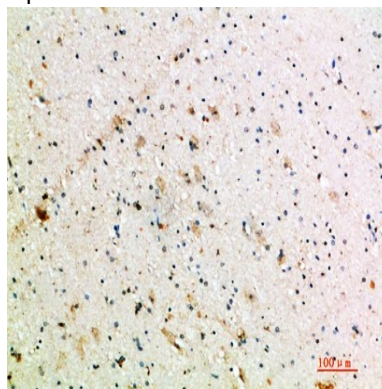
Research Area

MAPK_ERK_Growth;MAPK_G_Protein;Neurotrophin;

Image Data



Immunohistochemical analysis of paraffin-embedded human-kidney, antibody was diluted at 1:200



Immunohistochemical analysis of paraffin-embedded human-brain, antibody was diluted at 1:200

Note

For research use only.