
Summary

Production Name	Nrl Rabbit Polyclonal Antibody
Description	Rabbit Polyclonal Antibody
Host	Rabbit
Application	WB,ELISA
Reactivity	Human,Mouse

Performance

Conjugation	Unconjugated
Modification	Unmodified
Isotype	IgG
Clonality	Polyclonal
Form	Liquid
Storage	Store at 4°C short term. Aliquot and store at -20°C long term. Avoid freeze/thaw cycles.
Buffer	Liquid in PBS containing 50% glycerol, 0.5% BSA and 0.02% New type preservative N.
Purification	Affinity purification

Immunogen

Gene Name	NRL
Alternative Names	NRL; D14S46E; Neural retina-specific leucine zipper protein; NRL
Gene ID	4901.0
SwissProt ID	P54845.The antiserum was produced against synthesized peptide derived from human NRL. AA range:19-68

Application

Dilution Ratio	WB 1:500 - 1:2000. ELISA: 1:10000. Not yet tested in other applications.
Molecular Weight	25kD

Background

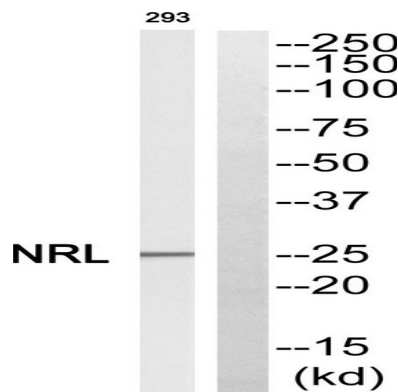
Product Name: Nrl Rabbit Polyclonal Antibody
Catalog #: APRab14900



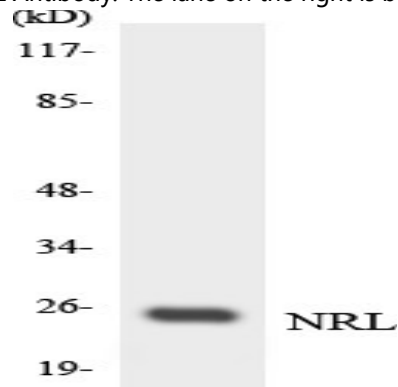
This gene encodes a basic motif-leucine zipper transcription factor of the Maf subfamily. The encoded protein is conserved among vertebrates and is a critical intrinsic regulator of photoreceptor development and function. Mutations in this gene have been associated with retinitis pigmentosa and retinal degenerative diseases. [provided by RefSeq, Jul 2008],disease:Defects in NRL are the cause of retinitis pigmentosa type 27 (RP27) [MIM:162080]. RP leads to degeneration of retinal photoreceptor cells. Patients typically have night vision blindness and loss of midperipheral visual field. As their condition progresses, they lose their far peripheral visual field and eventually central vision as well. RP27 inheritance is autosomal dominant.,function:Transcription factor which regulates the expression of several rod-specific genes, including RHO and PDE6B.,online information:Retina International's Scientific Newsletter,similarity:Belongs to the bZIP family.,similarity:Contains 1 bZIP domain.,subunit:Interacts with FIZ1. This interaction represses transactivation.,tissue specificity:Neural retina.,

Research Area

Image Data

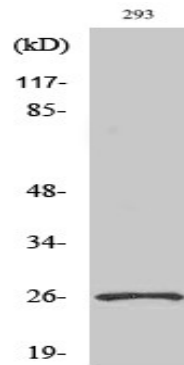


Western blot analysis of NRL Antibody. The lane on the right is blocked with the NRL peptide.



Western blot analysis of the lysates from HUVEC cells using NRL antibody.

Product Name: Nrl Rabbit Polyclonal Antibody
Catalog #: APRab14900



Western Blot analysis of various cells using Nrl Polyclonal Antibody cells nucleus extracted by Minute TM Cytoplasmic and Nuclear Fractionation kit (SC-003, Inventbiotech, MN, USA) .

Note

For research use only.