
Summary

| | |
|------------------------|-----------------------------------|
| Production Name | NRBF-2 Rabbit Polyclonal Antibody |
| Description | Rabbit Polyclonal Antibody |
| Host | Rabbit |
| Application | WB,ELISA |
| Reactivity | Human,Mouse,Rat |

Performance

| | |
|---------------------|--|
| Conjugation | Unconjugated |
| Modification | Unmodified |
| Isotype | IgG |
| Clonality | Polyclonal |
| Form | Liquid |
| Storage | Store at 4°C short term. Aliquot and store at -20°C long term. Avoid freeze/thaw cycles. |
| Buffer | Liquid in PBS containing 50% glycerol, 0.5% BSA and 0.02% New type preservative N. |
| Purification | Affinity purification |

Immunogen

| | |
|--------------------------|--|
| Gene Name | NRBF2 |
| Alternative Names | NRBF2; COPR; Nuclear receptor-binding factor 2; NRBF-2; Comodulator of PPAR and RXR |
| Gene ID | 29982.0 |
| SwissProt ID | Q96F24.The antiserum was produced against synthesized peptide derived from human NRBF2. AA range:140-189 |

Application

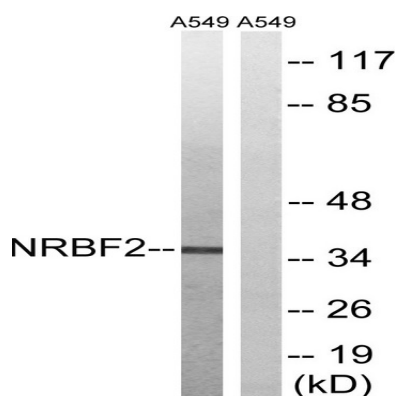
| | |
|-------------------------|--|
| Dilution Ratio | WB 1:500 - 1:2000. ELISA: 1:20000. Not yet tested in other applications. |
| Molecular Weight | 36kD |

Background

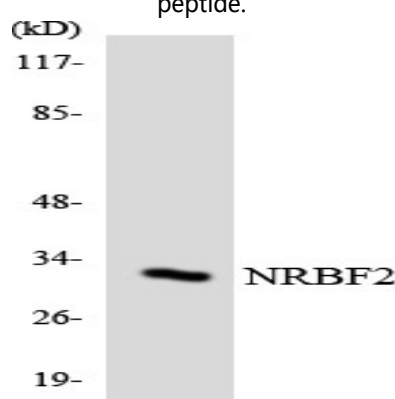
function:May modulate transcriptional activation by target nuclear receptors. Can act as transcriptional activator (in vitro).,subunit:Interacts with PPARA, PPARD and PPARG. Interacts with RARA, RARG and RXRA in the presence of bound ligand.,tissue specificity:Detected in keratinocytes, liver and placenta.,function:May modulate transcriptional activation by target nuclear receptors. Can act as transcriptional activator (in vitro).,subunit:Interacts with PPARA, PPARD and PPARG. Interacts with RARA, RARG and RXRA in the presence of bound ligand.,tissue specificity:Detected in keratinocytes, liver and placenta.,

Research Area

Image Data

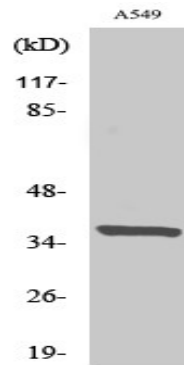


Western blot analysis of lysates from A549 cells, using NRBF2 Antibody. The lane on the right is blocked with the synthesized peptide.



Western blot analysis of the lysates from RAW264.7 cells using NRBF2 antibody.

Product Name: NRBF-2 Rabbit Polyclonal Antibody
Catalog #: APRab14885



Western Blot analysis of various cells using NRBF-2 Polyclonal Antibody

Note

For research use only.