

**Product Name: NPY Rabbit Polyclonal Antibody**  
**Catalog #: APRab14858**



## Summary

<b>Production Name</b>	NPY Rabbit Polyclonal Antibody
<b>Description</b>	Rabbit Polyclonal Antibody
<b>Host</b>	Rabbit
<b>Application</b>	IHC,ELISA
<b>Reactivity</b>	Human,Mouse,Rat

## Performance

<b>Conjugation</b>	Unconjugated
<b>Modification</b>	Unmodified
<b>Isotype</b>	IgG
<b>Clonality</b>	Polyclonal
<b>Form</b>	Liquid
<b>Storage</b>	Store at 4°C short term. Aliquot and store at -20°C long term. Avoid freeze/thaw cycles.
<b>Buffer</b>	Liquid in PBS containing 50% glycerol, 0.5% BSA and 0.02% New type preservative N.
<b>Purification</b>	Affinity purification

## Immunogen

<b>Gene Name</b>	NPY
<b>Alternative Names</b>	NPY; Pro-neuropeptide Y
<b>Gene ID</b>	4852.0
<b>SwissProt ID</b>	P01303.The antiserum was produced against synthesized peptide derived from human NPY. AA range:45-94

## Application

<b>Dilution Ratio</b>	IHC 1:100-500 ELISA 1:5000-20000
<b>Molecular Weight</b>	

## Background

This gene encodes a neuropeptide that is widely expressed in the central nervous system and influences many

**Product Name: NPY Rabbit Polyclonal Antibody**  
**Catalog #: APRab14858**

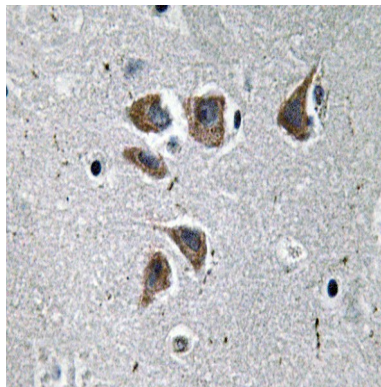


physiological processes, including cortical excitability, stress response, food intake, circadian rhythms, and cardiovascular function. The neuropeptide functions through G protein-coupled receptors to inhibit adenylyl cyclase, activate mitogen-activated protein kinase (MAPK), regulate intracellular calcium levels, and activate potassium channels. A polymorphism in this gene resulting in a change of leucine 7 to proline in the signal peptide is associated with elevated cholesterol levels, higher alcohol consumption, and may be a risk factor for various metabolic and cardiovascular diseases. The protein also exhibits antimicrobial activity against bacteria and fungi. [provided by RefSeq, Oct 2014],function:NPY is implicated in the control of feeding and in secretion of gonadotrophin-release hormone.,online information:Neuropeptide Y entry,similarity:Belongs to the NPY family.,tissue specificity:One of the most abundant peptides in the nervous system. Also found in some chromaffin cells of the adrenal medulla.,

## Research Area

Adipocytokine;

## Image Data



Immunohistochemistry analysis of NPY antibody in paraffin-embedded human brain tissue.

## Note

For research use only.