

Product Name: NPA1 Rabbit Polyclonal Antibody
Catalog #: APRab14824



Summary

| | |
|------------------------|---------------------------------|
| Production Name | NPA1 Rabbit Polyclonal Antibody |
| Description | Rabbit Polyclonal Antibody |
| Host | Rabbit |
| Application | IHC,ELISA |
| Reactivity | Human,Rat,Mouse |

Performance

| | |
|---------------------|--|
| Conjugation | Unconjugated |
| Modification | Unmodified |
| Isotype | IgG |
| Clonality | Polyclonal |
| Form | Liquid |
| Storage | Store at 4°C short term. Aliquot and store at -20°C long term. Avoid freeze/thaw cycles. |
| Buffer | Liquid in PBS containing 50% glycerol, 0.5% BSA and 0.02% New type preservative N. |
| Purification | Affinity purification |

Immunogen

| | |
|--------------------------|--|
| Gene Name | URB1 |
| Alternative Names | URB1; C21orf108; KIAA0539; NOP254; NPA1; Nucleolar pre-ribosomal-associated protein 1; Nucleolar protein 254 kDa; URB1 ribosome biogenesis 1 homolog |
| Gene ID | 9875.0 |
| SwissProt ID | O60287.The antiserum was produced against synthesized peptide derived from human URB1. AA range:2013-2062 |

Application

| | |
|-------------------------|--------------------------------|
| Dilution Ratio | IHC 1:100-1:300 ELISA: 1:40000 |
| Molecular Weight | |

Background

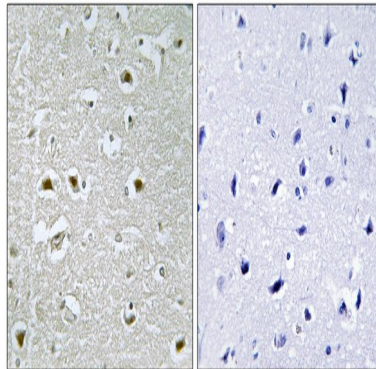
Product Name: NPA1 Rabbit Polyclonal Antibody
Catalog #: APRab14824



URB1, also named as C21orf108, KIAA0539 and NPA1, is a 2271 amino acid protein that is homologous to the *S. cerevisiae* protein URB1 which is a nucleolar protein involved in the normal accumulation of 25S and 5. S rRNAs and may also play a role in the biosynthesis of the 60S ribosomal unit. Also localized to the nucleolus, human URB1 is thought to have the same functions as *S. cerevisiae* URB1. The antibody is specific to URB1.

Research Area

Image Data



Immunohistochemistry analysis of paraffin-embedded human brain, using URB1 Antibody. The picture on the right is blocked with the synthesized peptide.

Note

For research use only.