

**Product Name: Nov Rabbit Polyclonal Antibody**  
**Catalog #: APRab14809**



## Summary

<b>Production Name</b>	Nov Rabbit Polyclonal Antibody
<b>Description</b>	Rabbit Polyclonal Antibody
<b>Host</b>	Rabbit
<b>Application</b>	WB,IHC,ELISA
<b>Reactivity</b>	Human,Mouse

## Performance

<b>Conjugation</b>	Unconjugated
<b>Modification</b>	Unmodified
<b>Isotype</b>	IgG
<b>Clonality</b>	Polyclonal
<b>Form</b>	Liquid
<b>Storage</b>	Store at 4°C short term. Aliquot and store at -20°C long term. Avoid freeze/thaw cycles.
<b>Buffer</b>	Liquid in PBS containing 50% glycerol, 0.5% BSA and 0.02% New type preservative N.
<b>Purification</b>	Affinity purification

## Immunogen

<b>Gene Name</b>	NOV NOV; CCN3; IGFBP9; NOVH; Protein NOV homolog; NovH; CCN family member 3;
<b>Alternative Names</b>	Insulin-like growth factor-binding protein 9; IBP-9; IGF-binding protein 9; IGFBP-9; Nephroblastoma-overexpressed gene protein homolog
<b>Gene ID</b>	4856.0
<b>SwissProt ID</b>	P48745.The antiserum was produced against synthesized peptide derived from the Internal region of human NOV. AA range:221-270

## Application

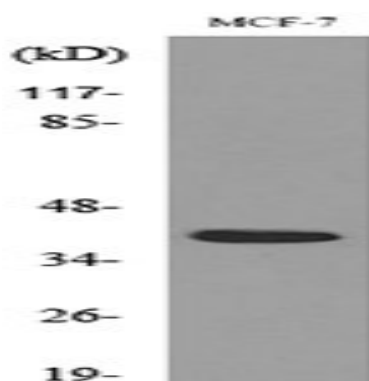
<b>Dilution Ratio</b>	WB 1:500 - 1:2000. IHC-p: 1:100-1:300. ELISA: 1:20000..
<b>Molecular Weight</b>	39kD

## Background

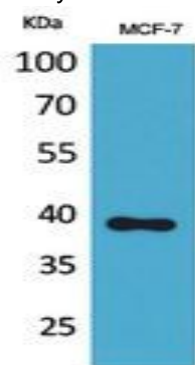
The protein encoded by this gene is a small secreted cysteine-rich protein and a member of the CCN family of regulatory proteins. CNN family proteins associate with the extracellular matrix and play an important role in cardiovascular and skeletal development, fibrosis and cancer development. [provided by RefSeq, Feb 2009],function:Immediate-early protein likely to play a role in cell growth regulation.,similarity:Belongs to the CCN family.,similarity:Contains 1 CTCK (C-terminal cystine knot-like) domain.,similarity:Contains 1 IGFBP N-terminal domain.,similarity:Contains 1 TSP type-1 domain.,similarity:Contains 1 VWFC domain.,subunit:Interacts with FBLN1.,tissue specificity:Increased expression in Wilms tumor of the stromal type.,

## Research Area

## Image Data

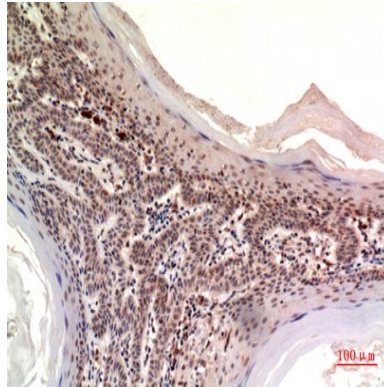


Western blot analysis of lysate from MCF-7 cells, using NOV Antibody.



Western Blot analysis of MCF-7 cells using Nov Polyclonal Antibody.. Secondary antibody was diluted at 1:20000

**Product Name: Nov Rabbit Polyclonal Antibody**  
**Catalog #: APRab14809**



Immunohistochemical analysis of paraffin-embedded human-skin, antibody was diluted at 1:100

**Note**

For research use only.