

**Product Name: NOM1 Rabbit Polyclonal Antibody**  
**Catalog #: APRab14793**



## Summary

<b>Production Name</b>	NOM1 Rabbit Polyclonal Antibody
<b>Description</b>	Rabbit Polyclonal Antibody
<b>Host</b>	Rabbit
<b>Application</b>	IHC,ELISA
<b>Reactivity</b>	Human,Mouse

## Performance

<b>Conjugation</b>	Unconjugated
<b>Modification</b>	Unmodified
<b>Isotype</b>	IgG
<b>Clonality</b>	Polyclonal
<b>Form</b>	Liquid
<b>Storage</b>	Store at 4°C short term. Aliquot and store at -20°C long term. Avoid freeze/thaw cycles.
<b>Buffer</b>	Liquid in PBS containing 50% glycerol, 0.5% BSA and 0.02% New type preservative N.
<b>Purification</b>	Affinity purification

## Immunogen

<b>Gene Name</b>	NOM1
<b>Alternative Names</b>	NOM1; C7orf3; Nucleolar MIF4G domain-containing protein 1; SGD1 homolog
<b>Gene ID</b>	64434.0
<b>SwissProt ID</b>	Q5C9Z4.The antiserum was produced against synthesized peptide derived from human NOM1. AA range:661-710

## Application

<b>Dilution Ratio</b>	IHC 1:100-1:300 ELISA: 1:40000
<b>Molecular Weight</b>	

## Background

Proteins that contain MIF4G (middle of eIF4G (MIM 600495)) and/or MA3 domains, such as NOM1, function in protein

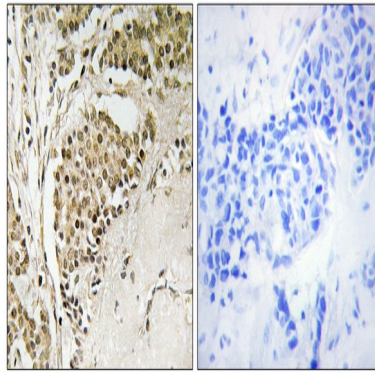
**Product Name: NOM1 Rabbit Polyclonal Antibody**  
**Catalog #: APRab14793**



translation. These domains include binding sites for members of the EIF4A family of ATP-dependent DEAD box RNA helicases (see EIF4A1; MIM 602641) (Simmons et al., 2005 [PubMed 15715967]).[supplied by OMIM, Mar 2008],similarity:Belongs to the CWC22 family.,similarity:Contains 1 MI domain.,similarity:Contains 1 MIF4G domain.,subunit:May interact with EIF4A1, EIF4A2 and EIF4A3.,tissue specificity:Expressed in heart and skeletal muscle.,

## Research Area

## Image Data



Immunohistochemistry analysis of paraffin-embedded human breast carcinoma tissue, using NOM1 Antibody. The picture on the right is blocked with the synthesized peptide.

## Note

For research use only.