

Summary

Production Name	NOC3L Rabbit Polyclonal Antibody
Description	Rabbit Polyclonal Antibody
Host	Rabbit
Application	WB
Reactivity	Human,Mouse

Performance

Conjugation	Unconjugated
Modification	Unmodified
Isotype	IgG
Clonality	Polyclonal
Form	Liquid
Storage	Store at 4°C short term. Aliquot and store at -20°C long term. Avoid freeze/thaw cycles.
Buffer	Liquid in PBS containing 50% glycerol, 0.5% BSA and 0.02% New type preservative N.
Purification	Affinity purification

Immunogen

Gene Name	NOC3L NOC3L; AD24; C10orf117; FAD24; Nucleolar complex protein 3 homolog; NOC3 protein
Alternative Names	homolog; Factor for adipocyte differentiation 24; NOC3-like protein; Nucleolar complex-associated protein 3-like protein
Gene ID	64318.0
SwissProt ID	Q8WTT2.The antiserum was produced against synthesized peptide derived from human NOC3L. AA range:415-464

Application

Dilution Ratio	WB 1:500-1:2000. ELISA: 1:40000.
Molecular Weight	93kD

Product Name: NOC3L Rabbit Polyclonal Antibody
Catalog #: APRab14775

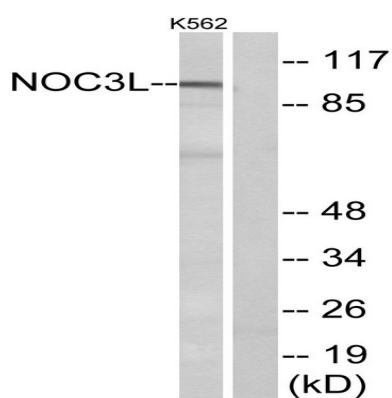


Background

function:May be required for adipogenesis.,similarity:Belongs to the CBF/MAK21 family.,tissue specificity:Expressed in colon, heart, kidney, liver, lung, placenta, skeletal muscle, small intestine, spleen and thymus.,function:May be required for adipogenesis.,similarity:Belongs to the CBF/MAK21 family.,tissue specificity:Expressed in colon, heart, kidney, liver, lung, placenta, skeletal muscle, small intestine, spleen and thymus.,

Research Area

Image Data



Western blot analysis of lysates from K562 cells, using NOC3L Antibody. The lane on the right is blocked with the synthesized peptide.

Note

For research use only.