

Summary

Production Name	NLRX1 Rabbit Polyclonal Antibody
Description	Rabbit Polyclonal Antibody
Host	Rabbit
Application	WB,IHC,ELISA
Reactivity	Human,Mouse,Rat

Performance

Conjugation	Unconjugated
Modification	Unmodified
Isotype	IgG
Clonality	Polyclonal
Form	Liquid
Storage	Store at 4°C short term. Aliquot and store at -20°C long term. Avoid freeze/thaw cycles.
Buffer	Liquid in PBS containing 50% glycerol, 0.5% BSA and 0.02% New type preservative N.
Purification	Affinity purification

Immunogen

Gene Name	NLRX1
Alternative Names	NLR family member X1 (Caterpillar protein 11.3;CLR11.3;Nucleotide-binding oligomerization domain protein 26;Nucleotide-binding oligomerization domain protein 5;Nucleotide-binding oligomerization domain protein 9)
Gene ID	79671.0
SwissProt ID	Q86UT6.The antiserum was produced against synthesized peptide derived from the Internal region of human NLRX1. AA range:581-630

Application

Dilution Ratio	WB 1:500-2000, IHC 1:50-300, ELISA 1:10000-20000.
Molecular Weight	108kD

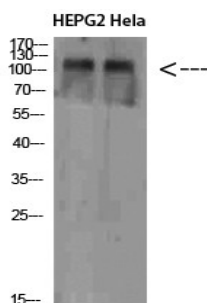
Background

The protein encoded by this gene is a member of the NLR family and localizes to the outer mitochondrial membrane. The encoded protein is a regulator of mitochondrial antiviral responses. Three transcript variants encoding the same protein have been found for this gene. [provided by RefSeq, Aug 2013],function:Participates in antiviral signaling. Acts as a negative regulator of MAVS-mediated antiviral responses, through the inhibition of the virus-induced RLH (RIG-like helicase)-MAVS interaction (PubMed:18200010). Has no inhibitory function on NF-Kappa-B and type 1 interferon signaling pathways, but enhances NF-Kappa-B and JUN N-terminal kinase dependent signaling through the production of reactive oxygen species (PubMed:18219313).,sequence caution:Translated as Trp.,sequence caution:Translation N-terminally extended.,similarity:Belongs to the NLRP family.,similarity:Contains 1 NACHT domain.,similarity:Contains 4 LRR (leucine-rich) repeats.,subunit:Interacts with MAVS.,tissue specificity:Ubiquitously expressed. Strongest expression in mammary gland, heart and muscle. Detected in HELA, 293T, THP-1, HL60, RAJI, and JURKAT cell lines (at protein level).,

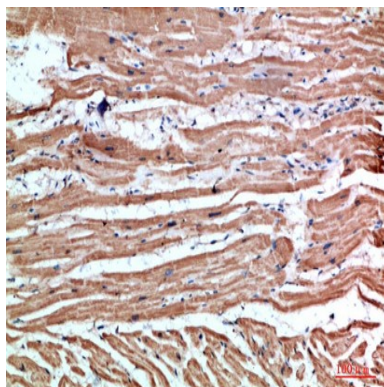
Research Area

RIG-I-like receptor;

Image Data



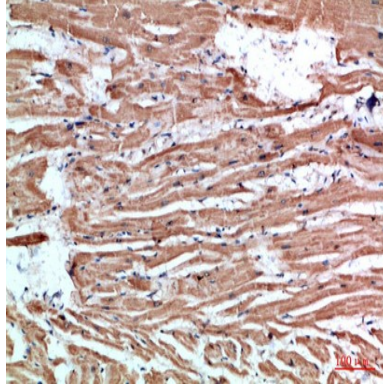
Western Blot analysis of HEPG2 HeLa cells using NLRX1 Polyclonal Antibody diluted at 1:1000. Secondary antibody was diluted at 1:20000



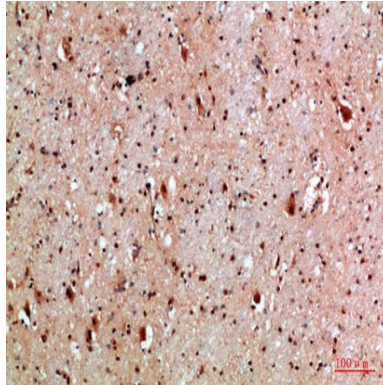
Product Name: NLRX1 Rabbit Polyclonal Antibody
Catalog #: APRab14747



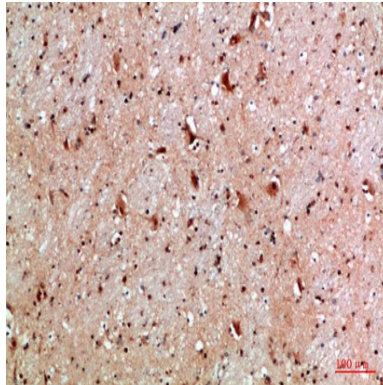
Immunohistochemical analysis of paraffin-embedded human-heart, antibody was diluted at 1:200



Immunohistochemical analysis of paraffin-embedded human-heart, antibody was diluted at 1:200



Immunohistochemical analysis of paraffin-embedded human-brain, antibody was diluted at 1:200



Immunohistochemical analysis of paraffin-embedded human-brain, antibody was diluted at 1:200

Note

For research use only.