

Summary

Production Name	NKX62 Rabbit Polyclonal Antibody
Description	Rabbit Polyclonal Antibody
Host	Rabbit
Application	WB
Reactivity	Human,Rat,Mouse

Performance

Conjugation	Unconjugated
Modification	Unmodified
Isotype	IgG
Clonality	Polyclonal
Form	Liquid
Storage	Store at 4°C short term. Aliquot and store at -20°C long term. Avoid freeze/thaw cycles.
Buffer	Liquid in PBS containing 50% glycerol, and 0.02% New type preservative N.
Purification	Affinity purification

Immunogen

Gene Name	NKX6-2 GTX NKX6B
Alternative Names	
Gene ID	84504.0
SwissProt ID	Q9C056.Synthesized peptide derived from part region of human protein

Application

Dilution Ratio	WB 1:500-2000 ELISA 1:5000-20000
Molecular Weight	30kD

Background

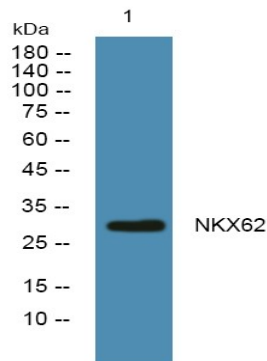
similarity:Contains 1 homeobox DNA-binding domain.,tissue specificity:Highest expression in brain.,similarity:Contains 1 homeobox DNA-binding domain.,tissue specificity:Highest expression in brain.,

Product Name: NKX62 Rabbit Polyclonal Antibody
Catalog #: APRab14739



Research Area

Image Data



Western blot analysis of lysates from K562 cells, primary antibody was diluted at 1:1000, 4° over night

Note

For research use only.