

## Summary

<b>Production Name</b>	Nkx-2.8 Rabbit Polyclonal Antibody
<b>Description</b>	Rabbit Polyclonal Antibody
<b>Host</b>	Rabbit
<b>Application</b>	WB
<b>Reactivity</b>	Human,Rat,Mouse

## Performance

<b>Conjugation</b>	Unconjugated
<b>Modification</b>	Unmodified
<b>Isotype</b>	IgG
<b>Clonality</b>	Polyclonal
<b>Form</b>	Liquid
<b>Storage</b>	Store at 4°C short term. Aliquot and store at -20°C long term. Avoid freeze/thaw cycles.
<b>Buffer</b>	Liquid in PBS containing 50% glycerol, 0.5% BSA and 0.02% New type preservative N.
<b>Purification</b>	Affinity purification

## Immunogen

<b>Gene Name</b>	NKX2-8
<b>Alternative Names</b>	
<b>Gene ID</b>	26257.0
<b>SwissProt ID</b>	Q8IUT7.The antiserum was produced against synthesized peptide derived from human NKX28. AA range:20-69

## Application

<b>Dilution Ratio</b>	WB 1:500-1:2000. ELISA: 1:40000.
<b>Molecular Weight</b>	26kD

## Background

The protein encoded by this gene is a homeobox-containing developmental regulator associated with liver development.

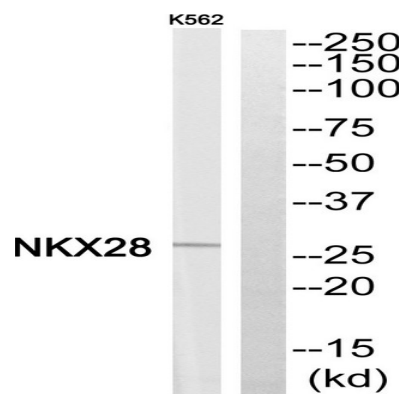
**Product Name: Nkx-2.8 Rabbit Polyclonal Antibody**  
**Catalog #: APRab14732**



The encoded protein binds to the alpha-fetoprotein (AFP) gene promoter and increases the expression of AFP. This gene is overexpressed in some lung cancers and is linked to poor patient survival, possibly due to its resistance to cisplatin. This gene is aberrantly methylated in pancreatic cancer, deleted in squamous cell lung carcinomas, and acts as a tumor suppressor in esophageal cancer. Mutations in this gene may also be a cause of neural tube defects. [provided by RefSeq, Dec 2015],similarity:Belongs to the NK-2 homeobox family.,similarity:Contains 1 homeobox DNA-binding domain.,

## Research Area

## Image Data



Western blot analysis of NKX28 Antibody. The lane on the right is blocked with the NKX28 peptide.

## Note

For research use only.