

**Product Name: NIFK Rabbit Polyclonal Antibody**  
**Catalog #: APRab14701**



## Summary

<b>Production Name</b>	NIFK Rabbit Polyclonal Antibody
<b>Description</b>	Rabbit Polyclonal Antibody
<b>Host</b>	Rabbit
<b>Application</b>	IHC,IF,ELISA
<b>Reactivity</b>	Human,Mouse

## Performance

<b>Conjugation</b>	Unconjugated
<b>Modification</b>	Unmodified
<b>Isotype</b>	IgG
<b>Clonality</b>	Polyclonal
<b>Form</b>	Liquid
<b>Storage</b>	Store at 4°C short term. Aliquot and store at -20°C long term. Avoid freeze/thaw cycles.
<b>Buffer</b>	Liquid in PBS containing 50% glycerol, 0.5% BSA and 0.02% New type preservative N.
<b>Purification</b>	Affinity purification

## Immunogen

<b>Gene Name</b>	MKI67IP MKI67IP; NIFK; NOPP34; MKI67 FHA domain-interacting nucleolar phosphoprotein;
<b>Alternative Names</b>	Nucleolar phosphoprotein Nopp34; Nucleolar protein interacting with the FHA domain of pKI-67; hNIFK
<b>Gene ID</b>	84365.0
<b>SwissProt ID</b>	Q9BYG3.The antiserum was produced against synthesized peptide derived from human NIFK. AA range:200-249

## Application

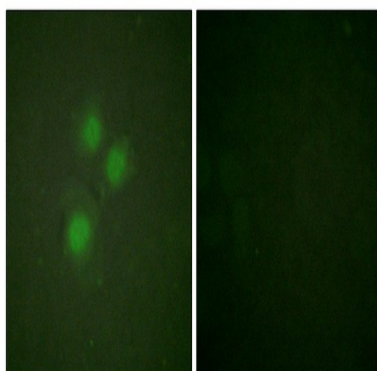
<b>Dilution Ratio</b>	IHC 1:100 - 1:300. IF 1:200 - 1:1000. ELISA: 1:5000. Not yet tested in other applications.
<b>Molecular Weight</b>	34kD

## Background

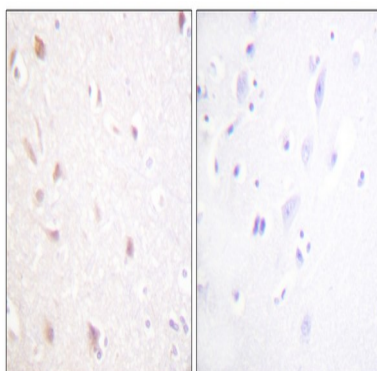
This gene encodes a protein that interacts with the forkhead-associated domain of the Ki-67 antigen. The encoded protein may bind RNA and may play a role in mitosis and cell cycle progression. Multiple pseudogenes exist on chromosomes 5, 10, 12, 15, and 19.[provided by RefSeq, Jan 2009],PTM:Sequentially phosphorylated on Thr-238, Thr-234 and Ser-230. Thr-234 is phosphorylated only when Thr-238 is phosphorylated. Likewise, phosphorylation at Ser-230 requires that Thr-234 and Thr-238 are phosphorylated. Phosphorylation enhances MKI67 binding.,similarity:Contains 1 RRM (RNA recognition motif) domain.,subcellular location:Localizes to mitotic chromosomes in conjunction with MKI67.,subunit:Binds to the FHA domain of MKI67; this interaction is enhanced in mitosis,.

## Research Area

## Image Data



Immunofluorescence analysis of HUVEC cells, using NIFK Antibody. The picture on the right is blocked with the synthesized peptide.



Immunohistochemistry analysis of paraffin-embedded human brain tissue, using NIFK Antibody. The picture on the right is blocked with the synthesized peptide.

**Product Name: NIFK Rabbit Polyclonal Antibody**  
**Catalog #: APRab14701**

---



**Note**

For research use only.