

---

## Summary

<b>Production Name</b>	NICE4 Rabbit Polyclonal Antibody
<b>Description</b>	Rabbit Polyclonal Antibody
<b>Host</b>	Rabbit
<b>Application</b>	WB,
<b>Reactivity</b>	Human,Mouse

## Performance

<b>Conjugation</b>	Unconjugated
<b>Modification</b>	Unmodified
<b>Isotype</b>	IgG
<b>Clonality</b>	Polyclonal
<b>Form</b>	Liquid
<b>Storage</b>	Store at 4°C short term. Aliquot and store at -20°C long term. Avoid freeze/thaw cycles.
<b>Buffer</b>	Liquid in PBS containing 50% glycerol, 0.5% BSA and 0.02% New type preservative N.
<b>Purification</b>	Affinity purification

## Immunogen

<b>Gene Name</b>	UBAP2L
<b>Alternative Names</b>	UBAP2L; KIAA0144; NICE4; Ubiquitin-associated protein 2-like; Protein NICE-4
<b>Gene ID</b>	9898.0
<b>SwissProt ID</b>	Q14157.The antiserum was produced against synthesized peptide derived from human UBAP2L. AA range:561-610

## Application

<b>Dilution Ratio</b>	WB 1:500 - 1:2000. ELISA: 1:20000. Not yet tested in other applications.
<b>Molecular Weight</b>	115kD

## Background

---

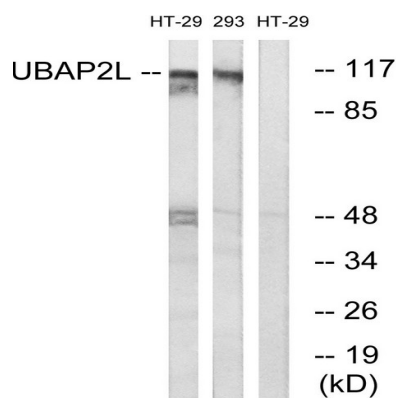
**Product Name: NICE4 Rabbit Polyclonal Antibody**  
**Catalog #: APRab14695**



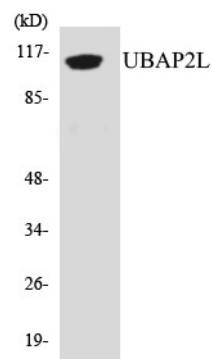
PTM:Phosphorylated upon DNA damage, probably by ATM or ATR.,similarity:Contains 1 UBA domain.,tissue specificity:Ubiquitous.,PTM:Phosphorylated upon DNA damage, probably by ATM or ATR.,similarity:Contains 1 UBA domain.,tissue specificity:Ubiquitous.,

## Research Area

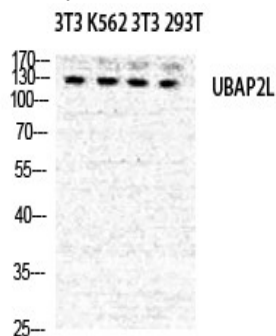
## Image Data



Western blot analysis of lysates from HT-29 and 293 cells, using UBAP2L Antibody. The lane on the right is blocked with the synthesized peptide.



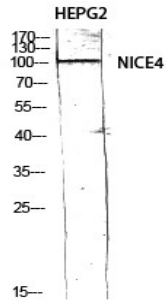
Western blot analysis of the lysates from Jurkat cells using UBAP2L antibody.



**Product Name: NICE4 Rabbit Polyclonal Antibody**  
**Catalog #: APRab14695**



Western Blot analysis of NIH-3T3 K562 NIH-3T3 293T cells using NICE4 Polyclonal Antibody diluted at 1: 500



Western Blot analysis of HEPG2 using NICE4 Polyclonal Antibody diluted at 1: 500

**Note**

For research use only.