
Summary

Production Name	NHE-6 Rabbit Polyclonal Antibody
Description	Rabbit Polyclonal Antibody
Host	Rabbit
Application	WB,ELISA
Reactivity	Human,Mouse

Performance

Conjugation	Unconjugated
Modification	Unmodified
Isotype	IgG
Clonality	Polyclonal
Form	Liquid
Storage	Store at 4°C short term. Aliquot and store at -20°C long term. Avoid freeze/thaw cycles.
Buffer	Liquid in PBS containing 50% glycerol, 0.5% BSA and 0.02% New type preservative N.
Purification	Affinity purification

Immunogen

Gene Name	SLC9A6
Alternative Names	SLC9A6; KIAA0267; NHE6; Sodium/hydrogen exchanger 6; Na(+)/H(+) exchanger 6; NHE-6; Solute carrier family 9 member 6
Gene ID	10479.0
SwissProt ID	Q92581.The antiserum was produced against synthesized peptide derived from human SLC9A6. AA range:551-600

Application

Dilution Ratio	WB 1:500 - 1:2000. ELISA: 1:40000. Not yet tested in other applications.
Molecular Weight	75kD

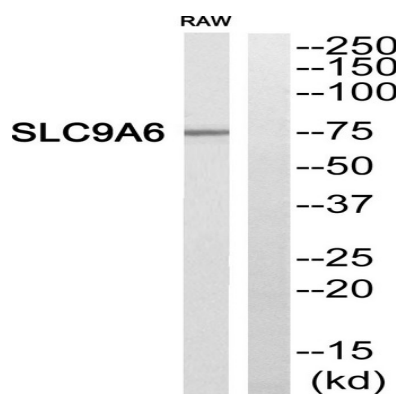
Background

This gene encodes a sodium-hydrogen exchanger that is a member of the solute carrier family 9. The encoded protein localizes to early and recycling endosomes and may be involved in regulating endosomal pH and volume. Defects in this gene are associated with X-linked syndromic mental retardation, Christianson type. Alternate splicing results in multiple transcript variants. [provided by RefSeq, Apr 2010], caution: Was initially identified as a mitochondrial inner membrane protein (PubMed:9507001), but was later shown to be localized in early and recycling endosomes and not mitochondria (PubMed:11940519), disease: Defects in SLC9A6 are the cause of mental retardation syndromic X-linked Christianson type (MRXSC) [MIM:300243]; also known as MRXS-Christianson or X-linked Angelman-like syndrome. The phenotype is characterized by profound mental retardation, epilepsy, ataxia, and microcephaly, and showed phenotypic overlap with Angelman syndrome., function: Electroneutral exchange of protons for Na(+) and K(+) across the early and recycling endosome membranes. Contributes to calcium homeostasis., similarity: Belongs to the monovalent cation:proton antiporter 1 (CPA1) transporter (TC 2.A.36) family., subcellular location: Is present in the recycling compartments including early and recycling endosomes, and only appears transiently on the plasma membrane., tissue specificity: Ubiquitous; but is most abundant in mitochondrion-rich tissues such as brain, skeletal muscle and heart.,

Research Area

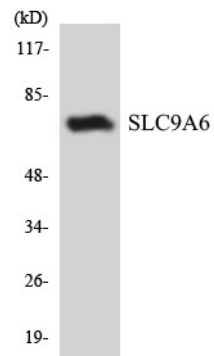
Cardiac muscle contraction;

Image Data

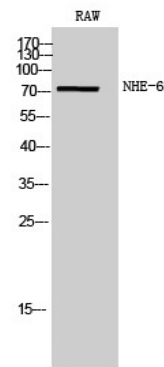


Western blot analysis of SLC9A6 Antibody. The lane on the right is blocked with the SLC9A6 peptide.

Product Name: NHE-6 Rabbit Polyclonal Antibody
Catalog #: APRab14685



Western blot analysis of the lysates from COLO205 cells using SLC9A6 antibody.



Western Blot analysis of RAW cells using NHE-6 Polyclonal Antibody

Note

For research use only.