

---

## Summary

<b>Production Name</b>	NFRκB Rabbit Polyclonal Antibody
<b>Description</b>	Rabbit Polyclonal Antibody
<b>Host</b>	Rabbit
<b>Application</b>	WB,ELISA
<b>Reactivity</b>	Human,Mouse,Monkey

## Performance

<b>Conjugation</b>	Unconjugated
<b>Modification</b>	Unmodified
<b>Isotype</b>	IgG
<b>Clonality</b>	Polyclonal
<b>Form</b>	Liquid
<b>Storage</b>	Store at 4°C short term. Aliquot and store at -20°C long term. Avoid freeze/thaw cycles.
<b>Buffer</b>	Liquid in PBS containing 50% glycerol, 0.5% BSA and 0.02% New type preservative N.
<b>Purification</b>	Affinity purification

## Immunogen

<b>Gene Name</b>	NFRKB
<b>Alternative Names</b>	NFRKB; INO80G; Nuclear factor related to kappa-B-binding protein; DNA-binding protein R kappa-B; INO80 complex subunit G
<b>Gene ID</b>	4798.0
<b>SwissProt ID</b>	Q6P4R8.The antiserum was produced against synthesized peptide derived from human NFRKB. AA range:463-512

## Application

<b>Dilution Ratio</b>	WB 1:500-2000; ELISA 2000-20000
<b>Molecular Weight</b>	110kD

**Product Name: NFRκB Rabbit Polyclonal Antibody**  
**Catalog #: APRab14658**

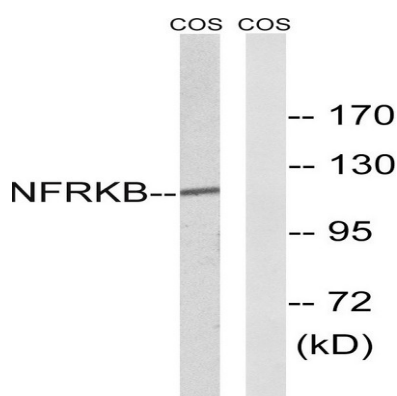


## Background

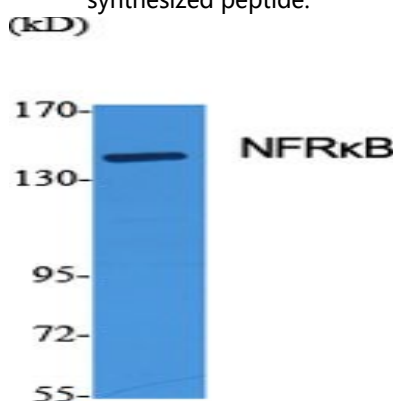
function: Binds to the DNA consensus sequence 5'-GGGGAATCTCC-3'. PTM: Phosphorylated upon DNA damage, probably by ATM or ATR. subunit: Component of the chromatin-remodeling INO80 complex, at least composed of ACTL6A, ACTR5, ACTR8, RVBL1, RVBL2, INO80, INO80B, INO80C, INO80D and INO80E. tissue specificity: Expressed in thymus, brain, testes, spleen and liver. function: Binds to the DNA consensus sequence 5'-GGGGAATCTCC-3'. PTM: Phosphorylated upon DNA damage, probably by ATM or ATR. subunit: Component of the chromatin-remodeling INO80 complex, at least composed of ACTL6A, ACTR5, ACTR8, RVBL1, RVBL2, INO80, INO80B, INO80C, INO80D and INO80E. tissue specificity: Expressed in thymus, brain, testes, spleen and liver.

## Research Area

## Image Data

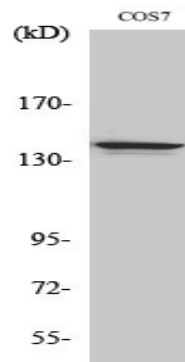


Western blot analysis of lysates from COS7 cells, using NFRKB Antibody. The lane on the right is blocked with the synthesized peptide.



Western Blot analysis of various cells using NFRκB Polyclonal Antibody diluted at 1: 500 cells nucleus extracted by Minute TM Cytoplasmic and Nuclear Fractionation kit (SC-003, Inventbiotech, MN, USA) .

**Product Name: NFRκB Rabbit Polyclonal Antibody**  
**Catalog #: APRab14658**



Western Blot analysis of COS7 cells using NFRκB Polyclonal Antibody diluted at 1 : 500 cells nucleus extracted by Minute TM Cytoplasmic and Nuclear Fractionation kit (SC-003, Invent biotech, MN, USA) .

**Note**

For research use only.