

Summary

Production Name	NFATc2IP Rabbit Polyclonal Antibody
Description	Rabbit Polyclonal Antibody
Host	Rabbit
Application	WB,ELISA
Reactivity	Human,Rat,Mouse,,Fish

Performance

Conjugation	Unconjugated
Modification	Unmodified
Isotype	IgG
Clonality	Polyclonal
Form	Liquid
Storage	Store at 4°C short term. Aliquot and store at -20°C long term. Avoid freeze/thaw cycles.
Buffer	Liquid in PBS containing 50% glycerol, 0.5% BSA and 0.02% New type preservative N.
Purification	Affinity purification

Immunogen

Gene Name	NFATC2IP NFATC2IP; NIP45; NFATC2-interacting protein; 45 kDa NF-AT-interacting protein; 45
Alternative Names	kDa NFAT-interacting protein; Nuclear factor of activated T-cells; cytoplasmic 2-interacting protein
Gene ID	84901.0
SwissProt ID	Q8NCF5.The antiserum was produced against synthesized peptide derived from human NFATC2IP. AA range:151-200

Application

Dilution Ratio	IHC 1:50-300
Molecular Weight	48kD

Product Name: NFATc2IP Rabbit Polyclonal Antibody
Catalog #: APRab14642

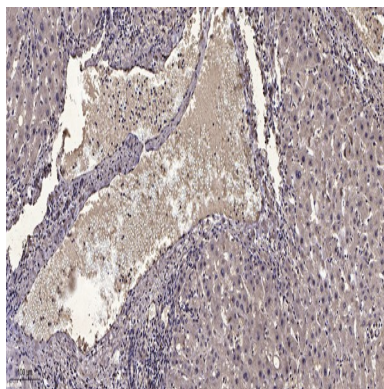


Background

function:Plays a role in the inducible expression of cytokine genes in T-cells, especially by increasing NFAT-driven IL-4 production.,PTM:Methylation at the N-terminus by PRMT1 modulates interaction with the NFAT complex and results in augmented cytokine production.,similarity:Contains 1 ubiquitin-like domain.,subcellular location:TRAF1 is associated with a fraction of NFATC2IP in the cytoplasm and prevents its translocation to the nucleus.,subunit:Interacts with NFATC2, TRAF1, TRAF2 and PRMT1.,function:Plays a role in the inducible expression of cytokine genes in T-cells, especially by increasing NFAT-driven IL-4 production.,PTM:Methylation at the N-terminus by PRMT1 modulates interaction with the NFAT complex and results in augmented cytokine production.,similarity:Contains 1 ubiquitin-like domain.,subcellular location:TRAF1 is associated with a fraction of NFATC2IP in the cytoplasm and prevents its translocation to the nucleus.,subunit:Interacts with NFATC2, TRAF1, TRAF2 and PRMT1.,

Research Area

Image Data



Immunohistochemical analysis of paraffin-embedded human liver cancer. 1, Antibody was diluted at 1:200 (4° overnight) .
2, Tris-EDTA,pH9.0 was used for antigen retrieval. 3,Secondary antibody was diluted at 1:200 (room temperature, 45min) .

Note

For research use only.