

**Product Name: Neurotrimin Rabbit Polyclonal Antibody**  
**Catalog #: APRab14625**



## Summary

|                        |  |
|------------------------|--|
| <b>Production Name</b> | Neurotrimin Rabbit Polyclonal Antibody |
| <b>Description</b>     | Rabbit Polyclonal Antibody             |
| <b>Host</b>            | Rabbit                                 |
| <b>Application</b>     | WB,ELISA                               |
| <b>Reactivity</b>      | Human,Rat,Mouse                        |

## Performance

|                     |  |
|---------------------|--|
| <b>Conjugation</b>  | Unconjugated   |
| <b>Modification</b> | Unmodified   |
| <b>Isotype</b>      | IgG  |
| <b>Clonality</b>    | Polyclonal   |
| <b>Form</b>         | Liquid   |
| <b>Storage</b>      | Store at 4°C short term. Aliquot and store at -20°C long term. Avoid freeze/thaw cycles. |
| <b>Buffer</b>       | Liquid in PBS containing 50% glycerol, 0.5% BSA and 0.02% New type preservative N.       |
| <b>Purification</b> | Affinity purification  |

## Immunogen

|                          |   |
|--------------------------|---|
| <b>Gene Name</b>         | NTM   |
| <b>Alternative Names</b> | NTM; IGLON2; NT; Neurotrimin; hNT; IgLON family member 2  |
| <b>Gene ID</b>           | 50863.0   |
| <b>SwissProt ID</b>      | Q9P121.The antiserum was produced against synthesized peptide derived from human NT. AA range:235-284 |

## Application

|                         |                                     |
|-------------------------|-------------------------------------|
| <b>Dilution Ratio</b>   | WB 1:500 - 1:2000. ELISA: 1:20000.. |
| <b>Molecular Weight</b> | 42kD                                |

## Background

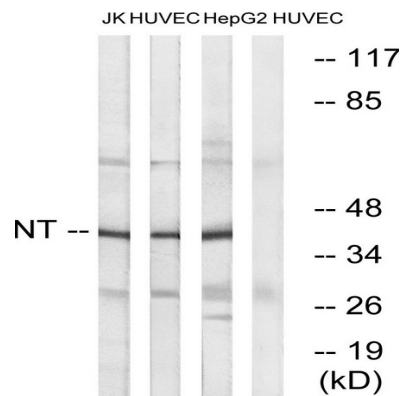
**Product Name: Neurotrimin Rabbit Polyclonal Antibody**  
**Catalog #: APRab14625**



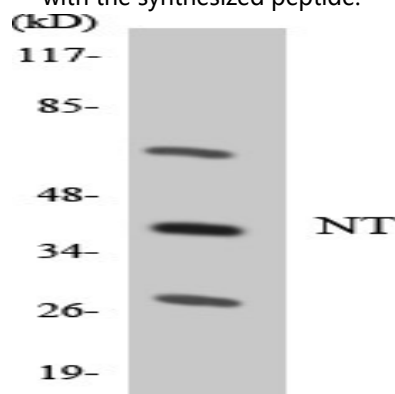
This gene encodes a member of the IgLON (LAMP, OBCAM, Ntm) family of immunoglobulin (Ig) domain-containing glycosylphosphatidylinositol (GPI)-anchored cell adhesion molecules. The encoded protein may promote neurite outgrowth and adhesion via a homophilic mechanism. This gene is closely linked to a related family member, opioid binding protein/cell adhesion molecule-like (OPCML), on chromosome 11. Multiple transcript variants encoding different isoforms have been found for this gene. [provided by RefSeq, Jan 2009],function:Neural cell adhesion molecule.,similarity:Belongs to the immunoglobulin superfamily. IgLON family.,similarity:Contains 3 Ig-like C2-type (immunoglobulin-like) domains.,

**Research Area**

**Image Data**

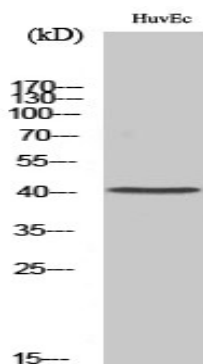


Western blot analysis of lysates from HUVEC, HepG2, and Jurkat cells, using NT Antibody. The lane on the right is blocked with the synthesized peptide.



Western blot analysis of the lysates from HepG2 cells using NT antibody.

**Product Name: Neurotrimin Rabbit Polyclonal Antibody**  
**Catalog #: APRab14625**



Western Blot analysis of various cells using Neurotrimin Polyclonal Antibody

**Note**

For research use only.