

## Summary

<b>Production Name</b>	Neurotensin Rabbit Polyclonal Antibody
<b>Description</b>	Rabbit Polyclonal Antibody
<b>Host</b>	Rabbit
<b>Application</b>	WB
<b>Reactivity</b>	Human,Mouse,Rat

## Performance

<b>Conjugation</b>	Unconjugated
<b>Modification</b>	Unmodified
<b>Isotype</b>	IgG
<b>Clonality</b>	Polyclonal
<b>Form</b>	Liquid
<b>Storage</b>	Store at 4°C short term. Aliquot and store at -20°C long term. Avoid freeze/thaw cycles.
<b>Buffer</b>	Liquid in PBS containing 50% glycerol, 0.5% BSA and 0.02% New type preservative N.
<b>Purification</b>	Affinity purification

## Immunogen

<b>Gene Name</b>	NTS
<b>Alternative Names</b>	NTS; Neurotensin/neuromedin N
<b>Gene ID</b>	4922.0
<b>SwissProt ID</b>	P30990.The antiserum was produced against synthesized peptide derived from the C-terminal region of human NTS. AA range:121-170

## Application

<b>Dilution Ratio</b>	WB 1:500-1:2000. ELISA: 1:20000.
<b>Molecular Weight</b>	20kD

## Background

This gene encodes a common precursor for two peptides, neuromedin N and neurotensin. Neurotensin is a secreted

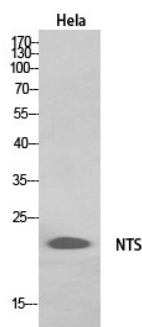
**Product Name: Neurotensin Rabbit Polyclonal Antibody**  
**Catalog #: APRab14624**



tridecapeptide, which is widely distributed throughout the central nervous system, and may function as a neurotransmitter or a neuromodulator. It may be involved in dopamine-associated pathophysiological events, in the maintenance of gut structure and function, and in the regulation of fat metabolism. Neurotensin also exhibits antimicrobial activity against bacteria and fungi. Tissue-specific processing may lead to the formation in some tissues of larger forms of neuromedin N and neurotensin. The large forms may represent more stable peptides that are also biologically active. [provided by RefSeq, Oct 2014],function:Neurotensin may play an endocrine or paracrine role in the regulation of fat metabolism. It causes contraction of smooth muscle.,online information:Neurotensin entry,similarity:Belongs to the neurotensin family.,subcellular location:Packaged within secretory vesicles.,

## Research Area

## Image Data



Western Blot analysis of HeLa, HepG2 cells using Neurotensin Polyclonal Antibody.. Secondary antibody was diluted at 1:20000

## Note

For research use only.