

Summary

Production Name	Neuroplastin Rabbit Polyclonal Antibody
Description	Rabbit Polyclonal Antibody
Host	Rabbit
Application	IHC,ELISA
Reactivity	Human,Mouse,Rat

Performance

Conjugation	Unconjugated
Modification	Unmodified
Isotype	IgG
Clonality	Polyclonal
Form	Liquid
Storage	Store at 4°C short term. Aliquot and store at -20°C long term. Avoid freeze/thaw cycles.
Buffer	Liquid in PBS containing 50% glycerol, 0.5% BSA and 0.02% New type preservative N.
Purification	Affinity purification

Immunogen

Gene Name	NPTN
Alternative Names	NPTN; SDFR1; SDR1; Neuroplastin; Stromal cell-derived receptor 1; SDR-1
Gene ID	27020.0
SwissProt ID	Q9Y639.The antiserum was produced against synthesized peptide derived from human NPTN. AA range:106-155

Application

Dilution Ratio	IHC 1:100-1:300 ELISA: 1:5000
Molecular Weight	

Background

This gene encodes a type I transmembrane protein belonging to the Ig superfamily. The protein is believed to be involved

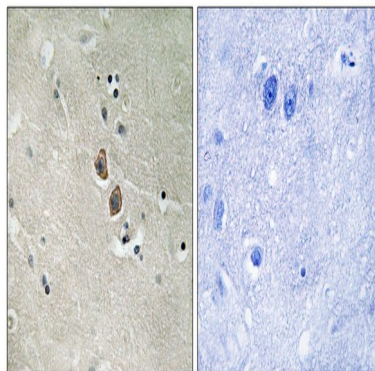
Product Name: Neuroplastin Rabbit Polyclonal Antibody
Catalog #: APRab14622



in cell-cell interactions or cell-substrate interactions. Alternative splicing results in multiple transcript variants. [provided by RefSeq, May 2009],PTM:N-glycosylated.,similarity:Contains 1 Ig-like C2-type (immunoglobulin-like) domain.,similarity:Contains 1 Ig-like V-type (immunoglobulin-like) domain.,tissue specificity:Isoform 1 is ubiquitous.,

Research Area

Image Data



Immunohistochemistry analysis of paraffin-embedded human brain tissue, using NPTN Antibody. The picture on the right is blocked with the synthesized peptide.

Note

For research use only.