

Product Name: Neuron Navigator 1 Rabbit Polyclonal Antibody
Catalog #: APRab14614



Summary

Production Name	Neuron Navigator 1 Rabbit Polyclonal Antibody
Description	Rabbit Polyclonal Antibody
Host	Rabbit
Application	IHC,ELISA
Reactivity	Human,Mouse

Performance

Conjugation	Unconjugated
Modification	Unmodified
Isotype	IgG
Clonality	Polyclonal
Form	Liquid
Storage	Store at 4°C short term. Aliquot and store at -20°C long term. Avoid freeze/thaw cycles.
Buffer	Liquid in PBS containing 50% glycerol, 0.5% BSA and 0.02% New type preservative N.
Purification	Affinity purification

Immunogen

Gene Name	NAV1
Alternative Names	NAV1; KIAA1151; KIAA1213; POMFIL3; STEERIN1; Neuron navigator 1; Pore membrane and/or filament-interacting-like protein 3; Steerin-1; Unc-53 homolog 1; unc53H1
Gene ID	89796.0
SwissProt ID	Q8NEY1.Synthesized peptide derived from Neuron Navigator 1 . at AA range: 510-590

Application

Dilution Ratio	IHC 1:100-1:300 ELISA: 1:40000
Molecular Weight	200kD

Background

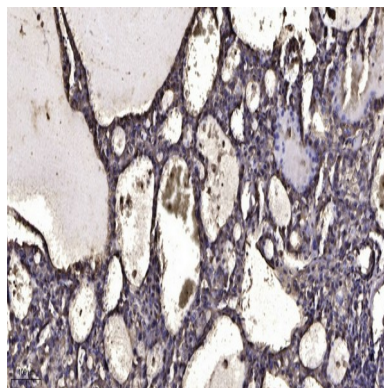
Product Name: Neuron Navigator 1 Rabbit Polyclonal Antibody
Catalog #: APRab14614



This gene belongs to the neuron navigator family and is expressed predominantly in the nervous system. The encoded protein contains coiled-coil domains and a conserved AAA domain characteristic for ATPases associated with a variety of cellular activities. This gene is similar to unc-53, a Caenorhabditis elegans gene involved in axon guidance. The exact function of this gene is not known, but it is thought to play a role in neuronal development and regeneration. Alternative splicing results in multiple transcript variants. [provided by RefSeq, Nov 2009],developmental stage:Expressed in fetal brain and heart.,function:May be involved in neuronal migration.,similarity:Belongs to the Nav/unc-53 family.,subcellular location:Associates with a subset of microtubule plus ends. Enriched in neuronal growth cones.,subunit:Interacts with tubulin.,tissue specificity:Broadly expressed at low levels. Expressed at high levels in heart, skeletal muscle and placenta.,

Research Area

Image Data



Immunohistochemical analysis of paraffin-embedded human liver cancer. 1, Antibody was diluted at 1:200 (4° overnight) .
2, Tris-EDTA,pH9.0 was used for antigen retrieval. 3,Secondary antibody was diluted at 1:200 (room temperature, 45min) .

Note

For research use only.