

Product Name: Neuromedin-U Rabbit Polyclonal Antibody
Catalog #: APRab14613

Summary

Production Name	Neuromedin-U Rabbit Polyclonal Antibody
Description	Rabbit Polyclonal Antibody
Host	Rabbit
Application	IHC,WB,ELISA
Reactivity	Human,Rat,Mouse

Performance

Conjugation	Unconjugated
Modification	Unmodified
Isotype	IgG
Clonality	Polyclonal
Form	Liquid
Storage	Store at 4°C short term. Aliquot and store at -20°C long term. Avoid freeze/thaw cycles.
Buffer	Liquid in PBS containing 50% glycerol, 0.5% BSA and 0.02% New type preservative N.
Purification	Affinity purification

Immunogen

Gene Name	NMU
Alternative Names	NMU; Neuromedin-U
Gene ID	10874.0
SwissProt ID	P48645.The antiserum was produced against synthesized peptide derived from human NMU. AA range:125-174

Application

Dilution Ratio	WB 1:500 - 1:2000. IHC 1:100 - 1:300. ELISA: 1:40000..
Molecular Weight	22kD

Product Name: Neuromedin-U Rabbit Polyclonal Antibody
Catalog #: APRab14613

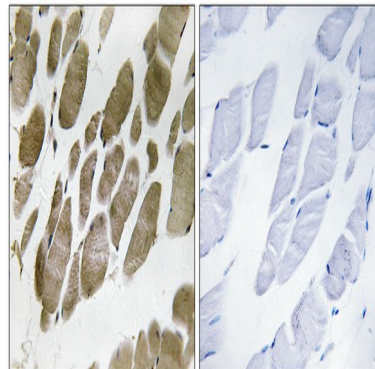


Background

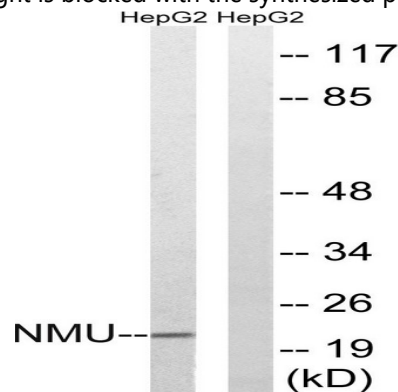
This gene encodes a member of the neuromedin family of neuropeptides. The encoded protein is a precursor that is proteolytically processed to generate a biologically active neuropeptide that plays a role in pain, stress, immune-mediated inflammatory diseases and feeding regulation. Increased expression of this gene was observed in renal, pancreatic and lung cancers. Alternative splicing results in multiple transcript variants encoding different isoforms. Some of these isoforms may undergo similar processing to generate the mature peptide. [provided by RefSeq, Jul 2015],function:Stimulates muscle contractions of specific regions of the gastrointestinal tract. In humans, NmU stimulates contractions of the ileum and urinary bladder.,similarity:Belongs to the NmU family.,tissue specificity:Expressed throughout the enteric nervous system with highest levels being found in the jejunum.,

Research Area

Image Data

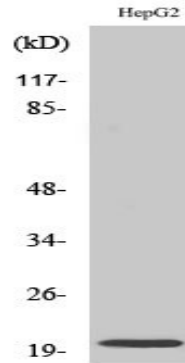


Immunohistochemistry analysis of paraffin-embedded human skeletal muscle tissue, using NMU Antibody. The picture on the right is blocked with the synthesized peptide.



Western blot analysis of lysates from HepG2 cells, using NMU Antibody. The lane on the right is blocked with the synthesized peptide.

Product Name: Neuromedin-U Rabbit Polyclonal Antibody
Catalog #: APRab14613



Western Blot analysis of various cells using Neuromedin-U Polyclonal Antibody diluted at 1: 500

Note

For research use only.