

Product Name: Neurocalcin δ Rabbit Polyclonal Antibody
Catalog #: APRab14603

Summary

Production Name	Neurocalcin δ Rabbit Polyclonal Antibody
Description	Rabbit Polyclonal Antibody
Host	Rabbit
Application	IHC,ELISA
Reactivity	Human,Mouse,Rat

Performance

Conjugation	Unconjugated
Modification	Unmodified
Isotype	IgG
Clonality	Polyclonal
Form	Liquid
Storage	Store at 4°C short term. Aliquot and store at -20°C long term. Avoid freeze/thaw cycles.
Buffer	Liquid in PBS containing 50% glycerol, 0.5% BSA and 0.02% New type preservative N.
Purification	Affinity purification

Immunogen

Gene Name	NCALD
Alternative Names	NCALD; Neurocalcin-delta
Gene ID	83988.0
SwissProt ID	P61601.Synthesized peptide derived from Neurocalcin δ . at AA range: 370-450

Application

Dilution Ratio	IHC 1:100-1:300 ELISA: 1:20000
Molecular Weight	

Background

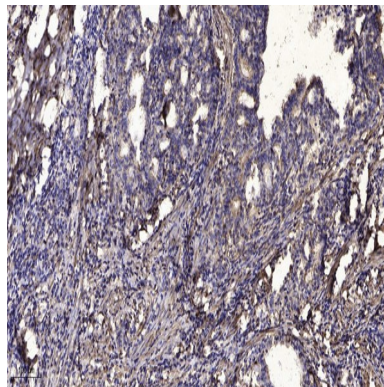
This gene encodes a member of the neuronal calcium sensor (NCS) family of calcium-binding proteins. The protein

Product Name: Neurocalcin δ Rabbit Polyclonal Antibody
Catalog #: APRab14603

contains an N-terminal myristoylation signal and four EF-hand calcium binding loops. The protein is cytosolic at resting calcium levels; however, elevated intracellular calcium levels induce a conformational change that exposes the myristoyl group, resulting in protein association with membranes and partial co-localization with the perinuclear trans-golgi network. The protein is thought to be a regulator of G protein-coupled receptor signal transduction. Several alternatively spliced variants of this gene have been determined, all of which encode the same protein; additional variants may exist but their biological validity has not been determined. [provided by RefSeq, Jul 2008],function:May be involved in the calcium-dependent regulation of rhodopsin phosphorylation. Binds three calcium ions.,similarity:Belongs to the recoverin family.,similarity:Contains 4 EF-hand domains.,tissue specificity:Retina, cerebrum, cerebellum, brain stem, spinal cord, testis, ovary and small intestine.,

Research Area

Image Data



Immunohistochemical analysis of paraffin-embedded human Gastric adenocarcinoma. 1, Antibody was diluted at 1:200 (4° overnight) . 2, Tris-EDTA,pH9.0 was used for antigen retrieval. 3,Secondary antibody was diluted at 1:200 (room temperature, 45min) .

Note

For research use only.