

Product Name: Neurexophilin-4 Rabbit Polyclonal Antibody
Catalog #: APRab14600

Summary

Production Name	Neurexophilin-4 Rabbit Polyclonal Antibody
Description	Rabbit Polyclonal Antibody
Host	Rabbit
Application	IHC,WB,ELISA
Reactivity	Human,Rat

Performance

Conjugation	Unconjugated
Modification	Unmodified
Isotype	IgG
Clonality	Polyclonal
Form	Liquid
Storage	Store at 4°C short term. Aliquot and store at -20°C long term. Avoid freeze/thaw cycles.
Buffer	Liquid in PBS containing 50% glycerol, 0.5% BSA and 0.02% New type preservative N.
Purification	Affinity purification

Immunogen

Gene Name	NXPH4
Alternative Names	NXPH4; NPH4; Neurexophilin-4
Gene ID	11247.0
SwissProt ID	O95158.The antiserum was produced against synthesized peptide derived from human NXPH4. AA range:216-265

Application

Dilution Ratio	WB 1:500 - 1:2000. IHC 1:100 - 1:300. ELISA: 1:40000..
Molecular Weight	33kD

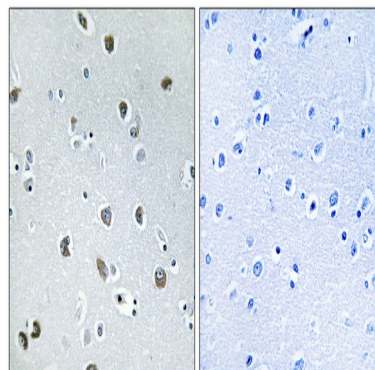
Product Name: Neurexophilin-4 Rabbit Polyclonal Antibody
Catalog #: APRab14600

Background

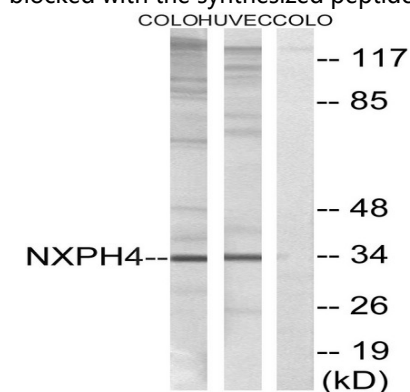
function: May be signaling molecules that resemble neuropeptides and that act by binding to alpha-neurexins and possibly other receptors. ,PTM: May be proteolytically processed at the boundary between the N-terminal non-conserved and the central conserved domain in neuron-like cells. ,similarity: Belongs to the neurexophilin family. ,tissue specificity: Expressed in brain, spleen, and testis. ,function: May be signaling molecules that resemble neuropeptides and that act by binding to alpha-neurexins and possibly other receptors. ,PTM: May be proteolytically processed at the boundary between the N-terminal non-conserved and the central conserved domain in neuron-like cells. ,similarity: Belongs to the neurexophilin family. ,tissue specificity: Expressed in brain, spleen, and testis. ,

Research Area

Image Data



Immunohistochemistry analysis of paraffin-embedded human brain tissue, using NXPH4 Antibody. The picture on the right is blocked with the synthesized peptide.



Western blot analysis of lysates from COLO and HUVEC cells, using NXPH4 Antibody. The lane on the right is blocked with the synthesized peptide.

Product Name: Neurexophilin-4 Rabbit Polyclonal Antibody
Catalog #: APRab14600



Western Blot analysis of various cells using Neurexophilin-4 Polyclonal Antibody

Note

For research use only.