

## Summary

<b>Production Name</b>	Neurexin III $\beta$ Rabbit Polyclonal Antibody
<b>Description</b>	Rabbit Polyclonal Antibody
<b>Host</b>	Rabbit
<b>Application</b>	WB
<b>Reactivity</b>	Human,Rat,Mouse

## Performance

<b>Conjugation</b>	Unconjugated
<b>Modification</b>	Unmodified
<b>Isotype</b>	IgG
<b>Clonality</b>	Polyclonal
<b>Form</b>	Liquid
<b>Storage</b>	Store at 4°C short term. Aliquot and store at -20°C long term. Avoid freeze/thaw cycles.
<b>Buffer</b>	Liquid in PBS containing 50% glycerol, 0.5% BSA and 0.02% New type preservative N.
<b>Purification</b>	Affinity purification

## Immunogen

<b>Gene Name</b>	NRXN3
<b>Alternative Names</b>	NRXN3; KIAA0743; Neurexin-3-beta; Neurexin III-beta
<b>Gene ID</b>	9369.0
<b>SwissProt ID</b>	Q9HDB5.Synthesized peptide derived from Neurexin III $\beta$ . at AA range: 30-110

## Application

<b>Dilution Ratio</b>	WB 1:500-2000; ELISA 2000-20000
<b>Molecular Weight</b>	70kD

## Background

NRXN3 (neurexin 3) encodes a member of a family of proteins that function in the nervous system as receptors and cell adhesion molecules. Extensive alternative splicing and the use of alternative promoters results in multiple transcript

**Product Name: Neurexin III $\beta$  Rabbit Polyclonal Antibody**  
**Catalog #: APRab14597**

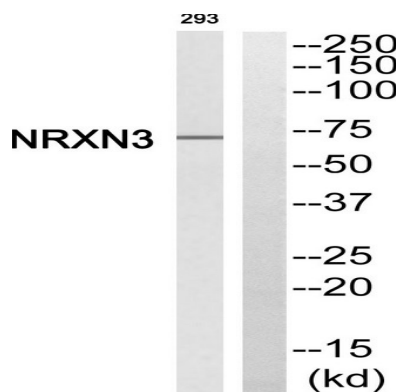


variants and protein isoforms for this gene, but the full-length nature of many of these variants has not been determined. Transcripts that initiate from an upstream promoter encode alpha isoforms, which contain epidermal growth factor-like (EGF-like) sequences and laminin G domains. Transcripts initiating from the downstream promoter encode beta isoforms, which lack EGF-like sequences. Genetic variation at this locus has been associated with a range of behavioral phenotypes, including alcohol dependence and autism spectrum disorder. cell morphogenesis, cell morphogenesis involved in differentiation, regulation of neurotransmitter levels, generation of a signal involved in cell-cell signaling, neurotransmitter transport, cell motion, cell adhesion, cell-cell signaling, synaptic transmission, neurotransmitter secretion, axonogenesis, axon guidance, synaptogenesis, transmission of nerve impulse, biological adhesion, cell projection organization, neuron differentiation, neuron projection development,secretion by cell, cellular component morphogenesis, cell part morphogenesis, extracellular structure organization,secretion, neuron development, cell morphogenesis involved in neuron differentiation, neuron projection morphogenesis, cell projection morphogenesis, synapse organization, neurological system process,

## Research Area

Cell adhesion molecules (CAMs);

## Image Data



Western blot analysis of NRXN3 Antibody. The lane on the right is blocked with the NRXN3 peptide.

## Note

For research use only.