

Summary

Production Name	Neurensin-1 Rabbit Polyclonal Antibody
Description	Rabbit Polyclonal Antibody
Host	Rabbit
Application	WB,ELISA
Reactivity	Human,Mouse,Rat

Performance

Conjugation	Unconjugated
Modification	Unmodified
Isotype	IgG
Clonality	Polyclonal
Form	Liquid
Storage	Store at 4°C short term. Aliquot and store at -20°C long term. Avoid freeze/thaw cycles.
Buffer	Liquid in PBS containing 50% glycerol, 0.5% BSA and 0.02% New type preservative N.
Purification	Affinity purification

Immunogen

Gene Name	NRSN1
Alternative Names	NRSN1; VMP; Neurensin-1; Neuro-p24; Vesicular membrane protein of 24 kDa; Vesicular membrane protein p24
Gene ID	140767.0
SwissProt ID	Q8IZ57.The antiserum was produced against synthesized peptide derived from human NRSN1. AA range:121-170

Application

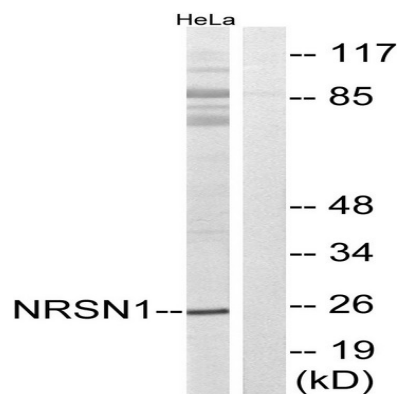
Dilution Ratio	WB 1:500 - 1:2000. ELISA: 1:40000..
Molecular Weight	25kD

Background

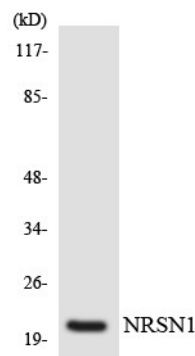
function: May play an important role in neural organelle transport, and in transduction of nerve signals or in nerve growth. May play a role in neurite extension., similarity: Belongs to the VMP family., subcellular location: Localizes mainly to neurites., tissue specificity: Expressed in brain. Not detectable in other tissues tested., function: May play an important role in neural organelle transport, and in transduction of nerve signals or in nerve growth. May play a role in neurite extension., similarity: Belongs to the VMP family., subcellular location: Localizes mainly to neurites., tissue specificity: Expressed in brain. Not detectable in other tissues tested.,

Research Area

Image Data

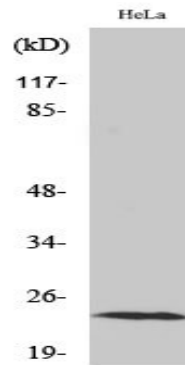


Western blot analysis of lysates from HeLa cells, using NRSN1 Antibody. The lane on the right is blocked with the synthesized peptide.



Western blot analysis of the lysates from 293 cells using NRSN1 antibody.

Product Name: Neurensin-1 Rabbit Polyclonal Antibody
Catalog #: APRab14595



Western Blot analysis of various cells using Neurensin-1 Polyclonal Antibody

Note

For research use only.