

Summary

| | |
|------------------------|---|
| Production Name | Neuralized-1 Rabbit Polyclonal Antibody |
| Description | Rabbit Polyclonal Antibody |
| Host | Rabbit |
| Application | WB,IHC,ELISA |
| Reactivity | Human,Rat,Mouse |

Performance

| | |
|---------------------|--|
| Conjugation | Unconjugated |
| Modification | Unmodified |
| Isotype | IgG |
| Clonality | Polyclonal |
| Form | Liquid |
| Storage | Store at 4°C short term. Aliquot and store at -20°C long term. Avoid freeze/thaw cycles. |
| Buffer | Liquid in PBS containing 50% glycerol, 0.5% BSA and 0.02% New type preservative N. |
| Purification | Affinity purification |

Immunogen

| | |
|--------------------------|---|
| Gene Name | NEURL |
| Alternative Names | NEURL; NEURL1; NEURL1A; RNF67; Neuralized-like protein 1A; h-neu; h-neuralized 1; RING finger protein 67 |
| Gene ID | 9148.0 |
| SwissProt ID | O76050.The antiserum was produced against synthesized peptide derived from human NEURL1. AA range:219-268 |

Application

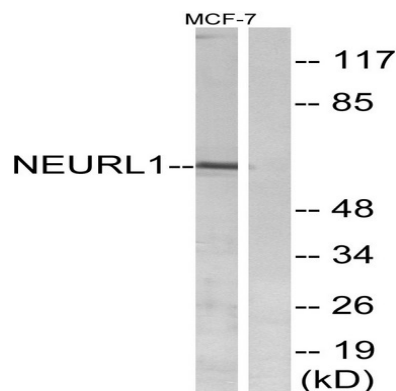
| | |
|-------------------------|--|
| Dilution Ratio | WB 1:500 - 1:2000. IHC 1:100 - 1:300. ELISA: 1:40000.. |
| Molecular Weight | 62kD |

Background

NEURL1B (neuralized homolog 1B), also known as neur2 or NEURL3, is a 555 amino acid protein that functions as an E3 ubiquitin-protein ligase. Involved in protein ubiquitination, NEURL1B contains two NHR (neuralized homology repeat) domains and one RING-type zinc finger. NEURL4 (neuralized homolog 4 (Drosophila)), also known as neuralized-like protein 4, is a 1,562 amino acid protein that is highly expressed in a wide variety of tissues. Containing six NHR (neuralized homology repeat) domains, NEURL4 exists as two alternatively spliced isoforms that are encoded by a gene that maps to human chromosome 17p13.1. microtubule cytoskeleton organization, microtubule bundle formation, reproductive developmental process, cell motion, cytoskeleton organization, microtubule-based process, gamete generation, germ cell development, spermatogenesis, spermatid development, sperm axoneme assembly, lactation, flagellum assembly, cellular component assembly involved in morphogenesis, sexual reproduction, cell projection organization, cell projection assembly, sperm motility, mammary gland development, multicellular organism reproduction, cellular component morphogenesis, axoneme assembly, flagellar axoneme assembly, flagellum organization, male gamete generation, spermatid differentiation, reproductive process in a multicellular organism, reproductive cellular process, gland development, cell motility, localization of cell,

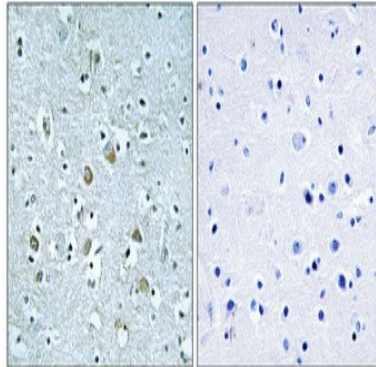
Research Area

Image Data



Western blot analysis of lysates from MCF-7 cells, using NEURL1 Antibody. The lane on the right is blocked with the synthesized peptide.

Product Name: Neuralized-1 Rabbit Polyclonal Antibody
Catalog #: APRab14590



Immunohistochemical analysis of paraffin-embedded Human brain. Antibody was diluted at 1:100 (4°,overnight) . High-pressure and temperature Tris-EDTA,pH8.0 was used for antigen retrieval. Negative contrl (right) obtaned from antibody was pre-absorbed by immunogen peptide.

Note

For research use only.